



## Portnall Road, W9

### £420,000

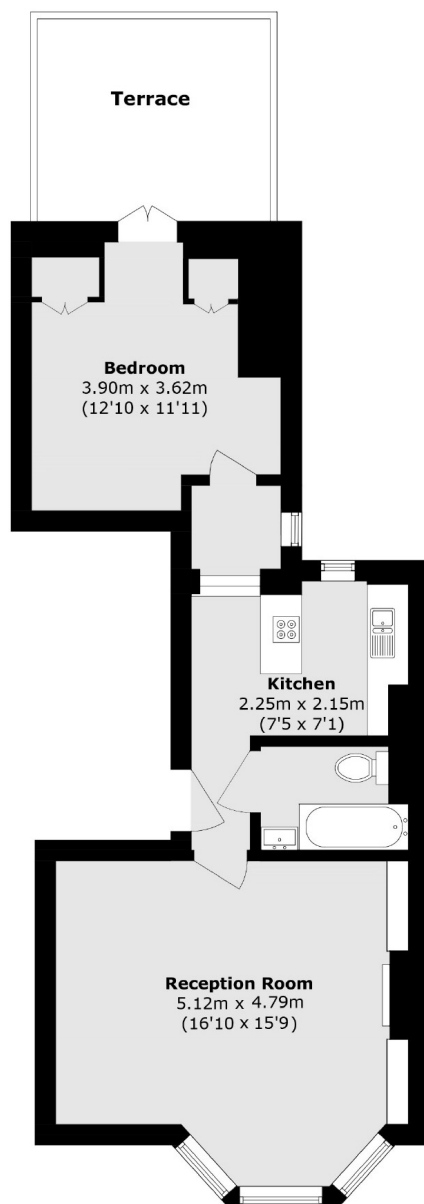
A beautifully presented first-floor flat within a charming Victorian conversion. This property offers a spacious double bedroom, a separate kitchen, a generous reception room with bay windows, and a private terrace.

Portnall Road is ideally situated near the charming cafés and shops of Salusbury Road, with easy access to Queens Park, Westbourne Park, and Maida Vale underground stations, providing convenient links to Central London.

### Features

- Chain Free
- New Long Lease
- Private Terrace
- Great Transport Links
- Separate Kitchen
- Unmodernised

# Portnall Road, Maida Vale, W9



Total area (approx.): 48.5 sq. m (522.0 sq. ft)

Terrace area (approx.): 9.9 sq. m (106.5 sq. ft)

## Dexters

Maida Vale  
298 Elgin Avenue  
London  
W9 1JS  
Sales  
020 7266 2020

Energy Rating: C. We aim to make our particulars both accurate and reliable. However they are not guaranteed; nor do they form part of an offer or contract. If you require clarification on any points then please contact us, especially if you're traveling some distance to view. Please note that appliances and heating systems have not been tested and therefore no warranties can be given as to their good working order.

 **RICS** | Regulated  
Estate Agent  
and Letting Agent

[dexters.co.uk](https://www.dexters.co.uk)