

Lanhill Road, W9

£276 Per week

Modern one bedroom apartment with wooden flooring and open-plan kitchen/living space. The flat is well located for the tube at Maida Vale, as well as Notting Hill and the famous Portobello Road Market.

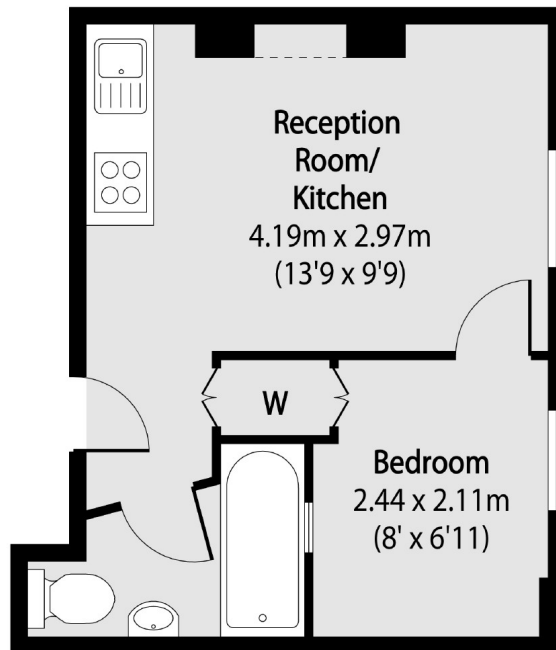
Modern one bedroom apartment with wooden flooring and open-plan kitchen/living space. The flat is well located for the tube at Maida Vale, as well as Notting Hill and the famous Portobello Road Market.

Features

- One double bedroom
- Wooden floors
- Open plan kitchen/ reception
- First Floor
- Period Conversion
- Maida Vale/Westbourne Park

Lanhill Road,
London, W9

Second Floor



Total area (approx): 23.60 sq m (254 sq. ft)

Contact

To arrange a viewing call our office on the number below or visit our website.



Energy Rating: . We aim to make our particulars both accurate and reliable. However they are not guaranteed; nor do they form part of an offer or contract. If you require clarification on any points then please contact us, especially if you're traveling some distance to view. Please note that appliances and heating systems have not been tested and therefore no warranties can be given as to their good working order.