



Sutherland Avenue, W9

£496 Per week

A well presented one bedroom flat on the first floor of a period conversion. The property comprises a spacious reception with semi open-plan kitchen, mezzanine level, double bedroom with fitted wardrobes and a modern bathroom. The property further benefits from ample natural light.

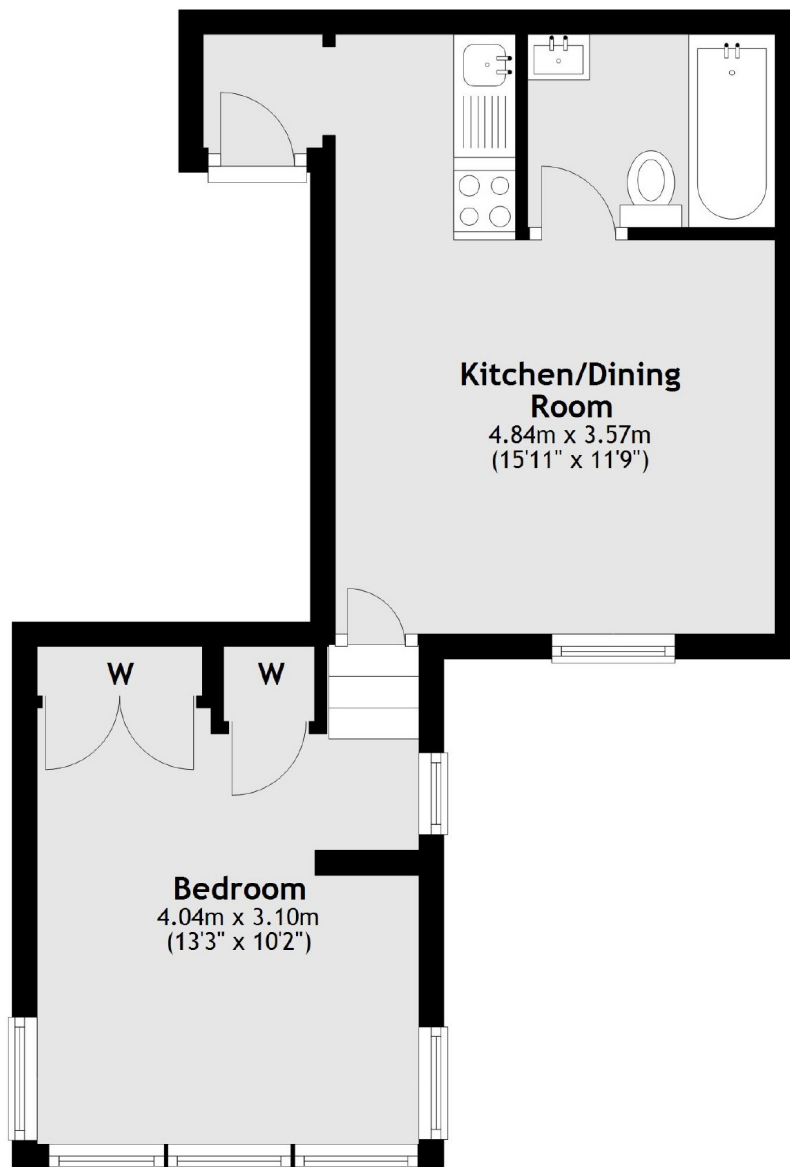
Being in the middle of Sutherland Avenue, you are ideally located for a number of local transport links as well as the shops and cafes of the Harrow Road, Little Venice and Maida Vale.

Features

- One Double Bedroom
- Split Level
- Modern Interior
- Period Conversion
- Bright Apartment
- Great Location

Sutherland Avenue, Maida Vale, W9

First Floor



Total area: approx. 31.0 sq. metres (333.3 sq. feet)