



Malvern Road, NW6

£450,000

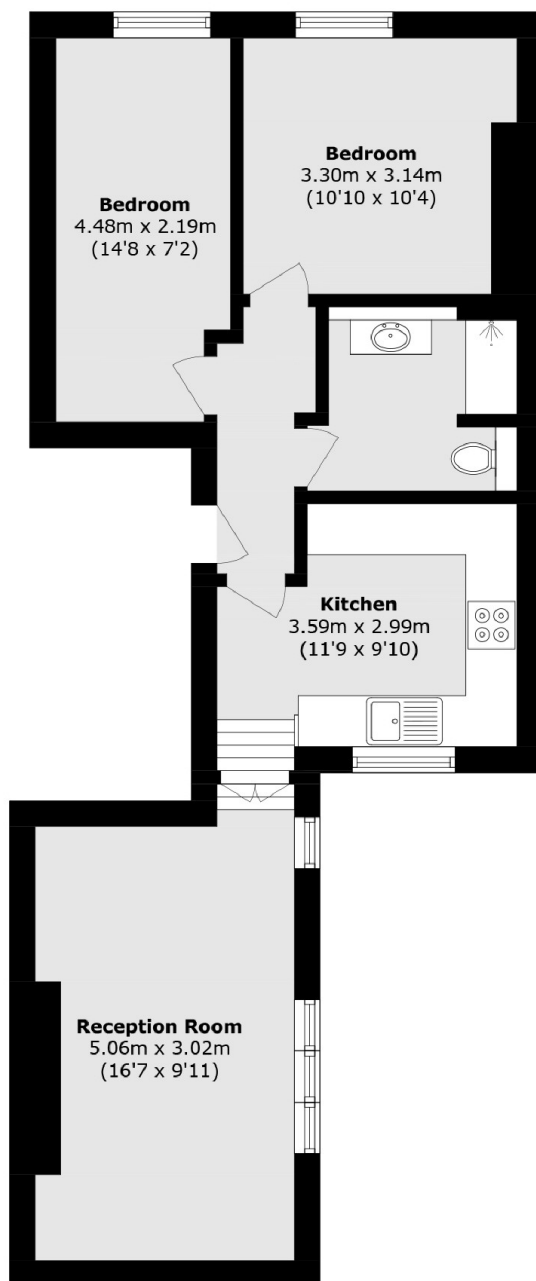
A second floor flat set in a Victorian conversion. The property offers two double bedrooms, a separate kitchen and a large, modern family bathroom. This property is being offered chain free.

Malvern Road features a multitude of shops and cafés, and is within half a mile of transport links to Central London, including Maida Vale underground station (Bakerloo line), and Paddington Recreation Ground.

Features

- Two Bedrooms
- Second Floor Flat
- Chain Free
- Separate Kitchen
- Share of Freehold
- Great Location

Malvern Road, London, NW6



Total area (approx.): 53.4 sq. m (574.7 sq. ft)