



Shirland Road, W9

£365,000

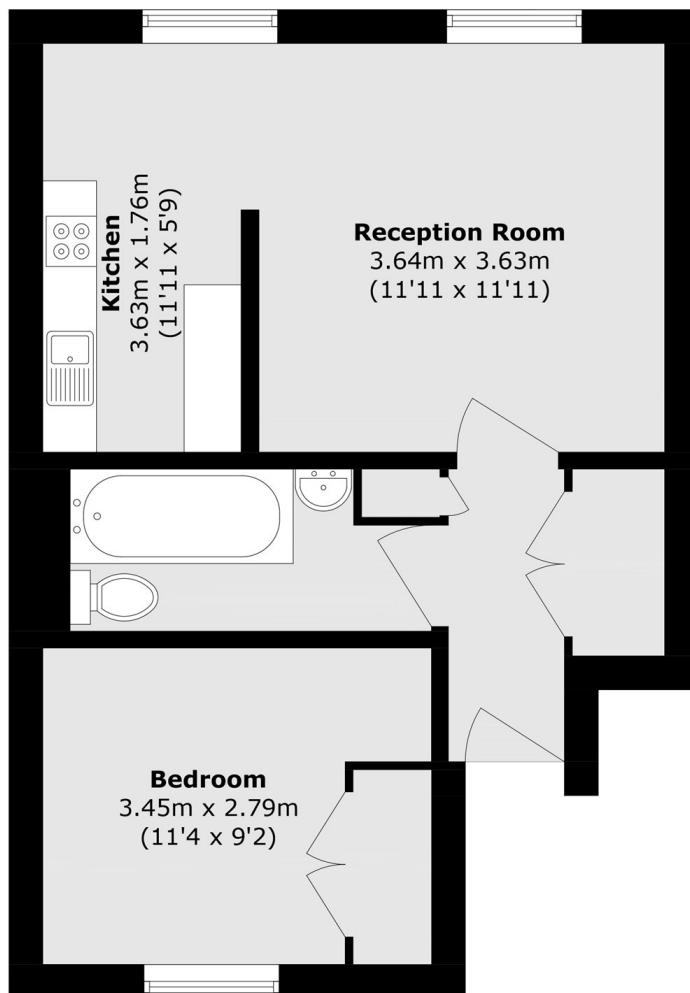
A top floor flat set within an attractive Victorian period conversion, offering excellent natural light and a quiet residential central London setting. The property comprises a double bedroom with built-in storage, a bright reception room and a separate kitchen. The layout is practical and well-proportioned. This property is being offered chain free.

Shirland Road is ideally located for both Maida Vale and Warwick Avenue underground stations (Bakerloo line), the open spaces of Paddington Recreational Ground and a number of independent shops.

Features

- Top Floor Flat
- One Double Bedroom
- Separate Kitchen
- Built-in Storage
- Chain Free
- Excellent Transport Links

Shirland Road, Maida Vale, W9



Third Floor

Total area (approx.): 40.6 sq. m (437.0 sq. ft)