



Shirland Road, W9

£625,000

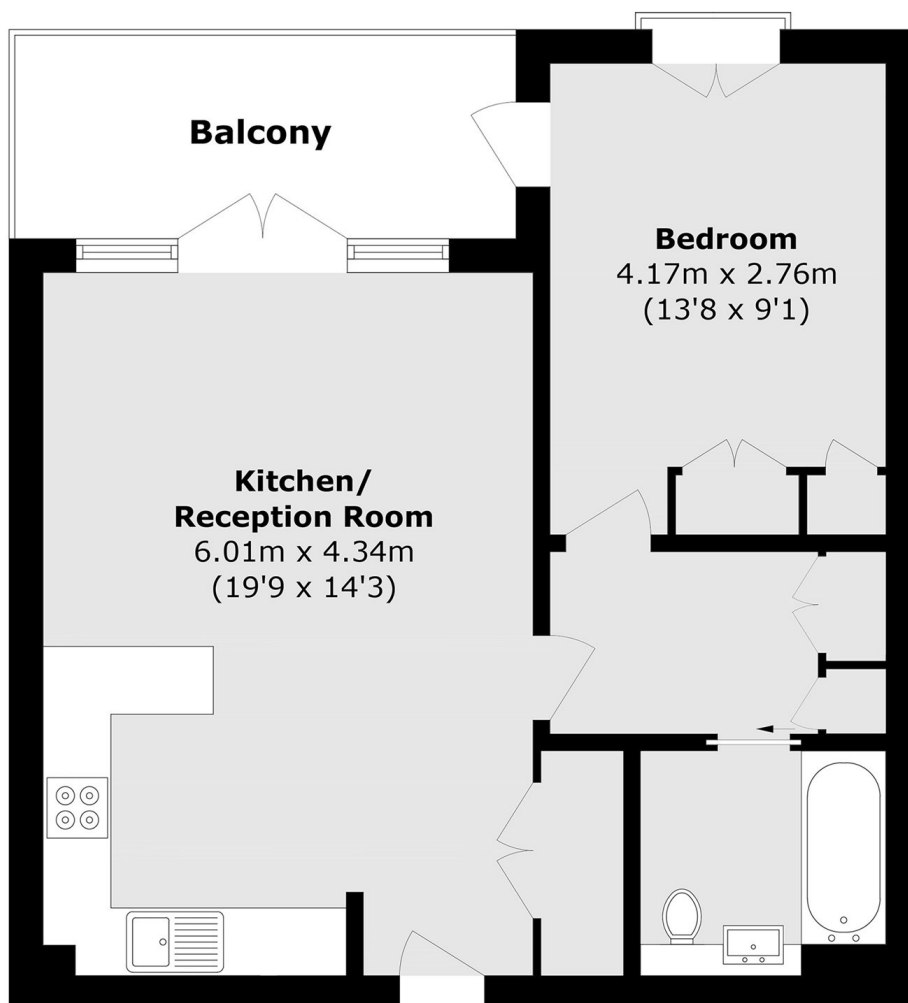
A well-presented second floor flat set in a modern purpose-built block. This property comes complete with an open plan kitchen/reception with access to a balcony, a double bedroom with built-in storage and a walk in wardrobe,.

Shirland Road is ideally located for both Maida Vale and Warwick Avenue tube stations, the open spaces of Paddington recreational grounds and a number of independent shops, and cafés.

Features

- Modern Purpose-Built Block
- Second Floor Flat
- Long Lease
- Ample Storage
- Private Balcony
- Great Transport Links

Shirland Road, Maida Vale, W9



Total area (approx.): 51.8 sq. m (557.6 sq. ft)

Balcony area (approx.): 7.0 sq. m (75.3 sq. ft)