



Admiral Walk, W9

£550,000

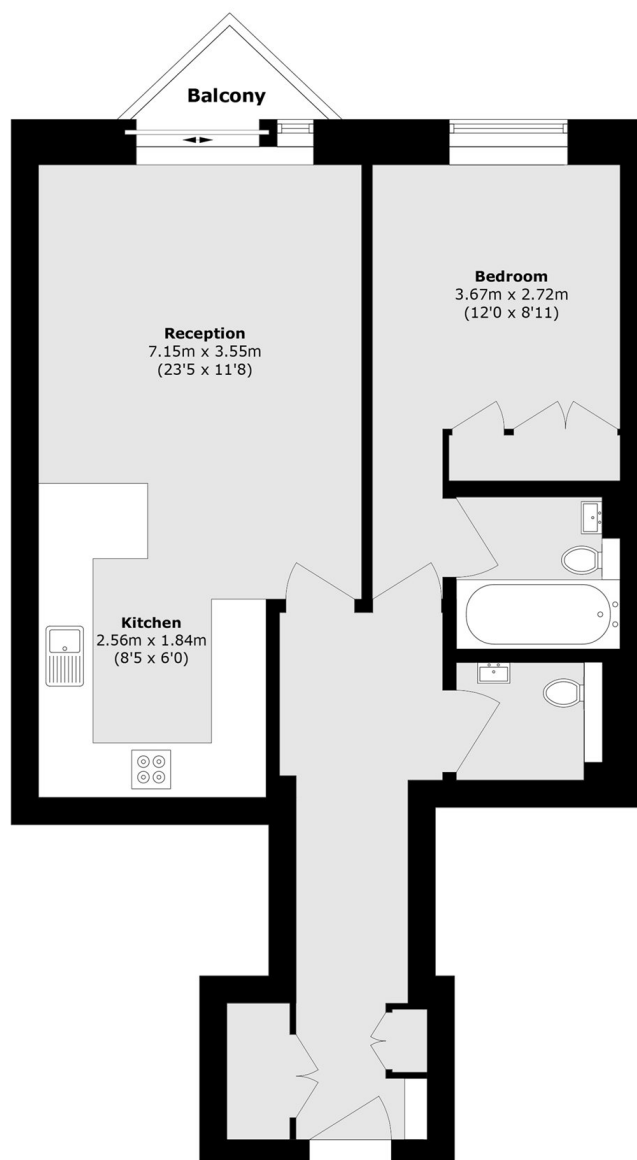
This well-presented fifth-floor apartment is located within a modern, purpose-built development. The property includes a spacious double bedroom, an open-plan kitchen and reception area, ample storage, and a private balcony. Residents benefit from 24-hour security and lift access.

The property is ideally located within walking distance of Royal Oak, Westbourne Park, and Warwick Avenue stations, providing excellent connectivity to Maida Vale, Paddington, and the West End. The charming canals and tranquil setting of Little Venice are just moments away.

Features

- Chain Free
- Open Plan Kitchen/Reception
- Ample Storage
- Underground Parking
- Membership to Harbour Club
- Great Transport Links

Admiral Walk, Maida Vale, W9



Total area (approx.): 51.3 sq. m (552.1 sq. ft)

Balcony area (approx.): 1.26 sq. m (13.5 sq. ft)