



## Burlington Close, W9

### £420,000

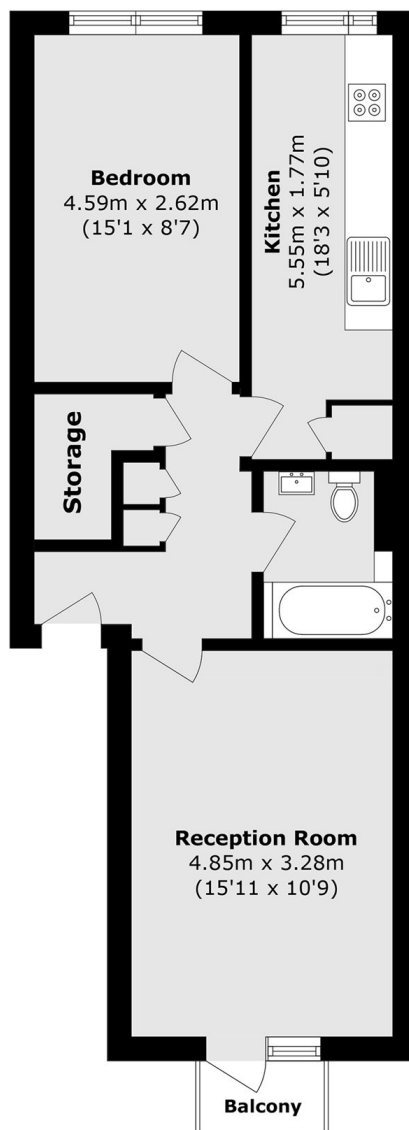
A beautifully presented top floor apartment set within a purpose-built development in Maida Vale. This bright home offers a double bedroom, a modern reception room with direct access to a south-west facing private balcony and a separate fully-fitted kitchen. The property also benefits from an allocated off-street private parking space and access to well-kept communal grounds.

Ideally positioned between Maida Vale and Westbourne Park stations, this property enjoys excellent transport links via the Bakerloo and Hammersmith & City lines, alongside easy access to the picturesque Little Venice canal and Paddington Recreation Ground. The property is also conveniently located close to Portobello Road Market and Notting Hill.

### Features

- Private Off-Street Parking
- Share of Freehold
- Gated Community
- Ample Storage
- Separate Kitchen
- Great Transport Links

# Burlington Close, Maida Vale, W9



Total area (approx.): 50.3 sq. m (541.4 sq. ft)

Balcony area (approx.): 1.4 sq. m (15.1 sq. ft)