



Fernhead Road, W9

£450,000

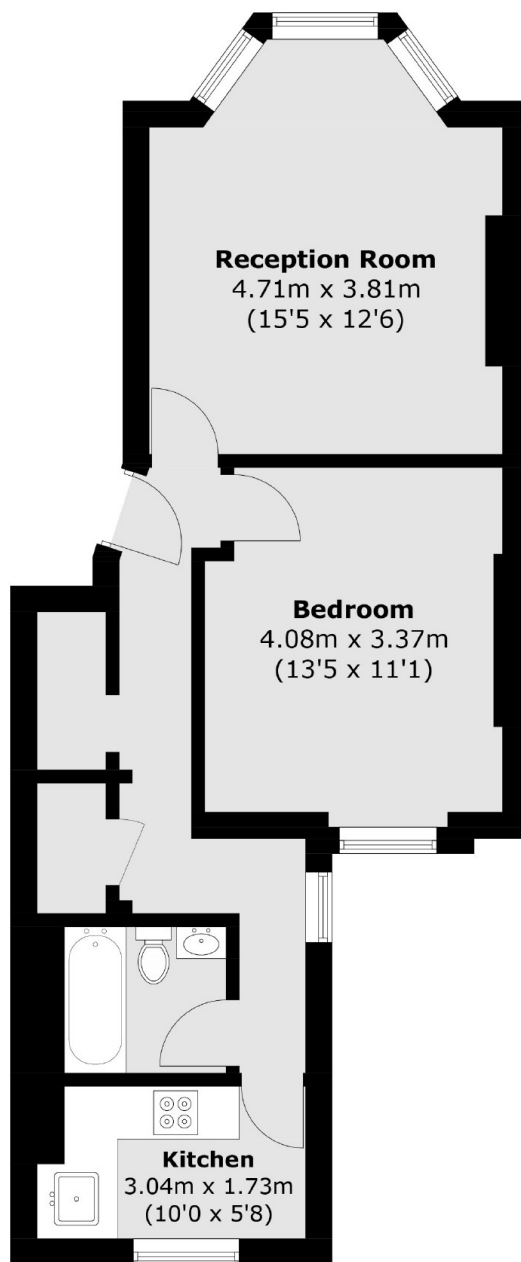
A raised ground floor flat set on a charming Victorian conversion. This well-presented property comes complete with a double bedroom, reception room with a feature bay window, separate kitchen and large double-glazed sash windows throughout.

Fernhead Road offers excellent access to Queen's Park and Westbourne Park, with numerous transport links to Central London. It's conveniently located within a mile of popular destinations, such as Little Venice, Portobello, and Paddington Recreation Ground.

Features

- Raised Ground Floor Flat
- Separate Kitchen
- Victorian Conversion
- Ample Storage
- Chain Free
- Great Location

Fernhead Road, Maida Vale, W9



Total area (approx.): 51.5 sq. m (554.3 sq. ft)