



Southwick Street, W2

£576 Per week

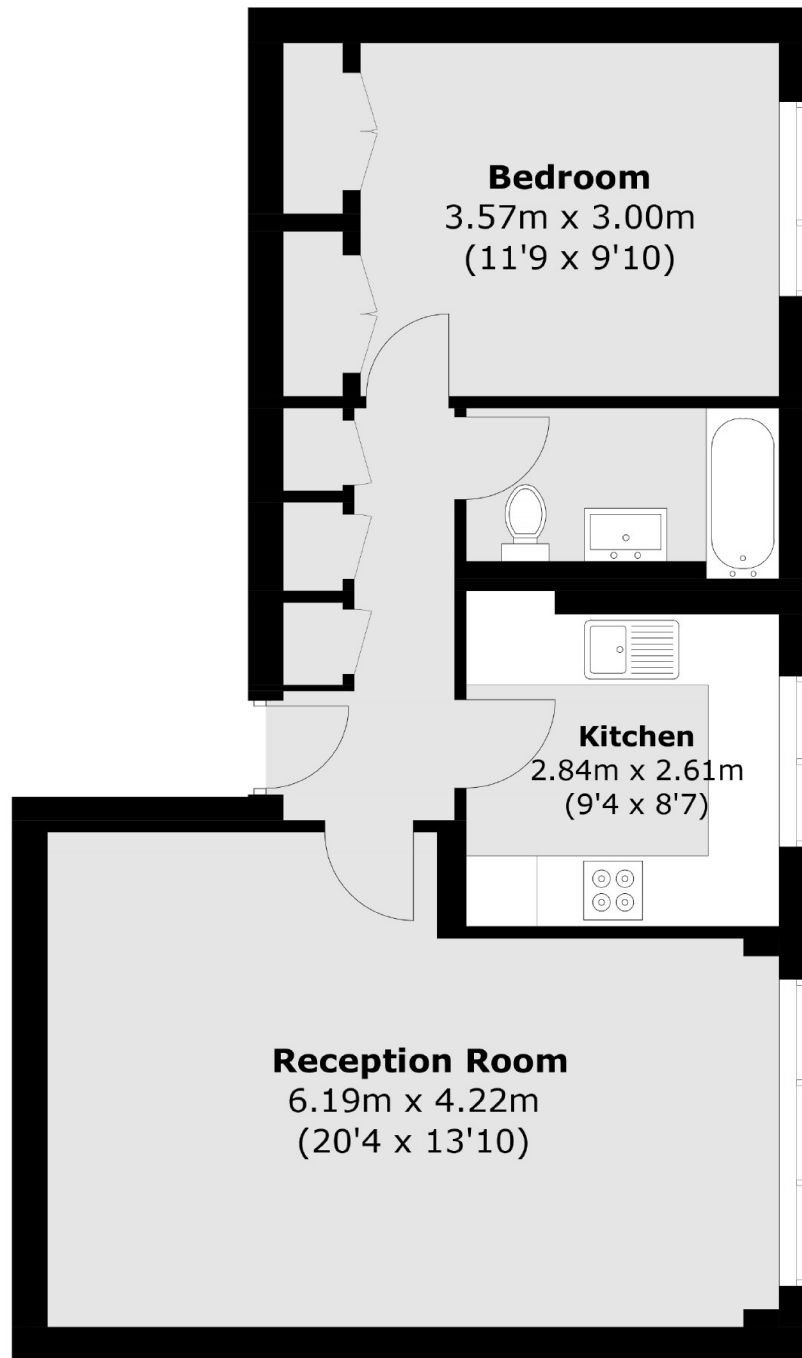
A spacious one bedroom apartment located in a popular portered block close to Hyde Park. The property has been refurbished to exquisite standards and features a modern living area, separate kitchen, newly refurbished bathroom, a double bedroom and built in storage throughout.

With the green space of Hyde Park on your doorstep, the closest stations are Lancaster Gate and Paddington.

Features

- Portered
- Newly refurbished
- One bedroom
- Large Reception
- Communal Gardens
- Separate kitchen

Southwick Street,
London, W2



Total area (approx.): 54.3 sq. m (584.5 sq. ft)

Dexters

Hyde Park and Bayswater
4-5 Spring Street
London
W2 3RA
Lettings
020 7298 1560

Energy Rating: . We aim to make our particulars both accurate and reliable. However they are not guaranteed; nor do they form part of an offer or contract. If you require clarification on any points then please contact us, especially if you're traveling some distance to view. Please note that appliances and heating systems have not been tested and therefore no warranties can be given as to their good working order.

 **RICS** | Regulated
Estate Agent
and Letting Agent

dexters.co.uk