



The Quadrangle, W2

£950 Per week

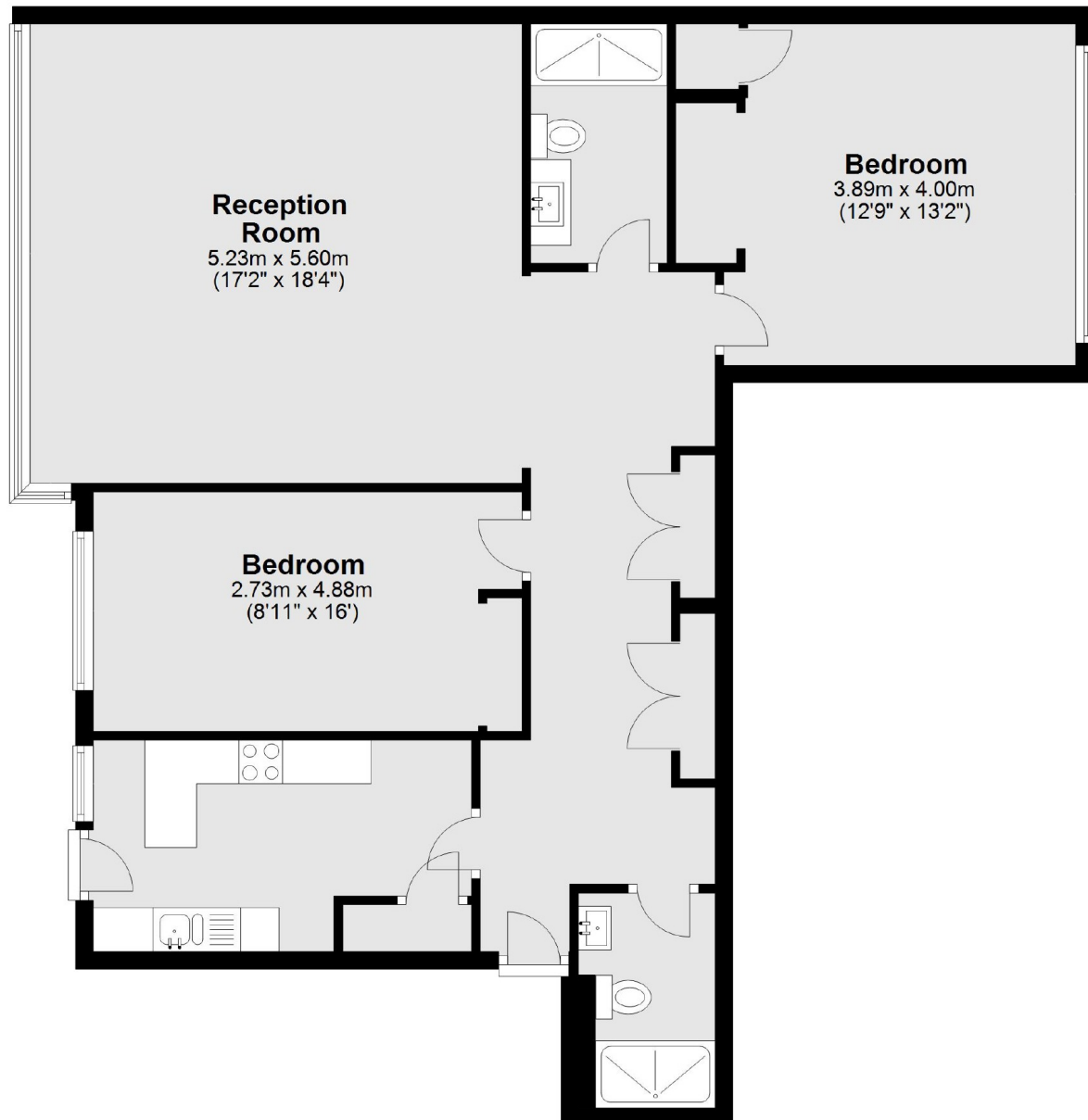
A bright and spacious two bedroomed apartment comprising of a spacious reception room, contemporary fully fitted kitchen, a generous sized bedroom located at the rear of the property and a balcony as well as communal gardens.

Located a short walk from Edgware Road and Paddington tube stations (Circle, District, Bakerloo and Hammersmith & City Lines) and the amenities of the Edgware Road and Connaught Village

Features

- 24 Hour Concierge
- Lift
- Marble Arch Location
- Large Reception
- Balcony
- Communal Gardens

The Quadrangle, London, W2



Total area: approx. 97.3 sq. metres (1047.4 sq. feet)

Dexters

Hyde Park and Bayswater
4-5 Spring Street
London
W2 3RA
Lettings
020 7298 1560

Energy Rating: C. We aim to make our particulars both accurate and reliable. However they are not guaranteed; nor do they form part of an offer or contract. If you require clarification on any points then please contact us, especially if you're traveling some distance to view. Please note that appliances and heating systems have not been tested and therefore no warranties can be given as to their good working order.

 **RICS** | Regulated
Estate Agent
and Letting Agent

[dexters.co.uk](https://www.dexters.co.uk)