

Westbourne Terrace, W2

£1,500 Per week

This exceptional 3-bedroom, 4-bathroom duplex apartment, situated on the prestigious Westbourne Terrace. Spanning the ground and first floors of a well-maintained period building, this property combines classic elegance with modern luxury, offering a spacious and versatile living space.

Each bedroom is well-sized and features fitted wardrobes and the master bedroom also benefits from large windows, filling the room with natural light and large en-suite.

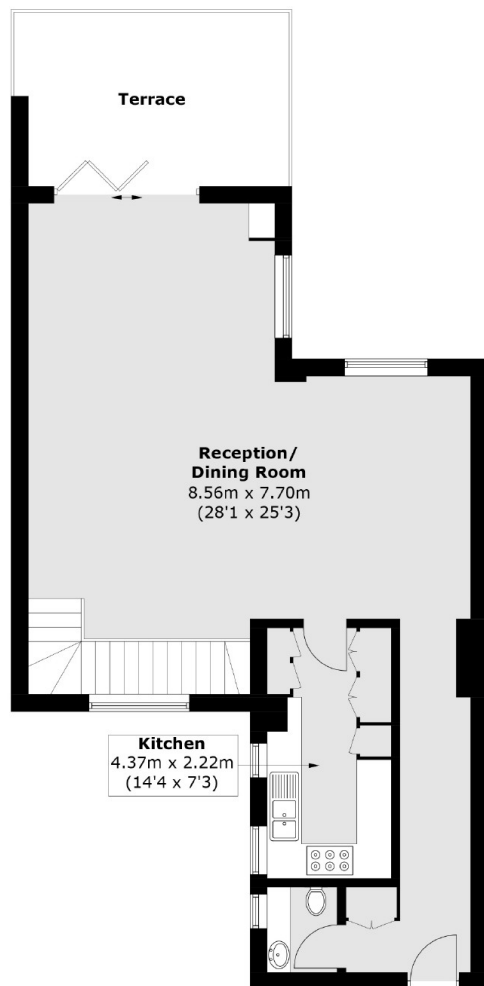
The property boasts chic, neutral décor with premium fixtures and fittings throughout. The contemporary kitchen is equipped with high-end appliances and plenty of storage space.

Located on Westbourne Terrace, this apartment is just a short stroll to Paddington Station, providing excellent transport links across London. Hyde Park is also within walking distance, offering a peaceful green space to enjoy.

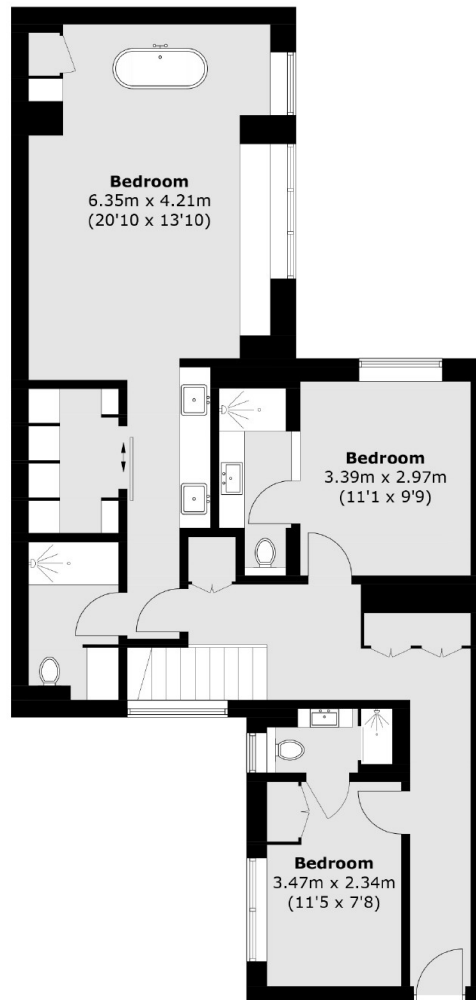
Features

- 3 Bedrooms
- 4 Bathroom
- Duplex
- Private Terrace
- Modern Fixtures
- Quiet

Westbourne Terrace, London, W2



Ground Floor



First Floor

Total area (approx.): 160.2 sq. m (1,724.4 sq. ft)
Terrace : 14.1 sq. m (151.8 sq. ft)