



Alfred Road, W2

£484 Per week

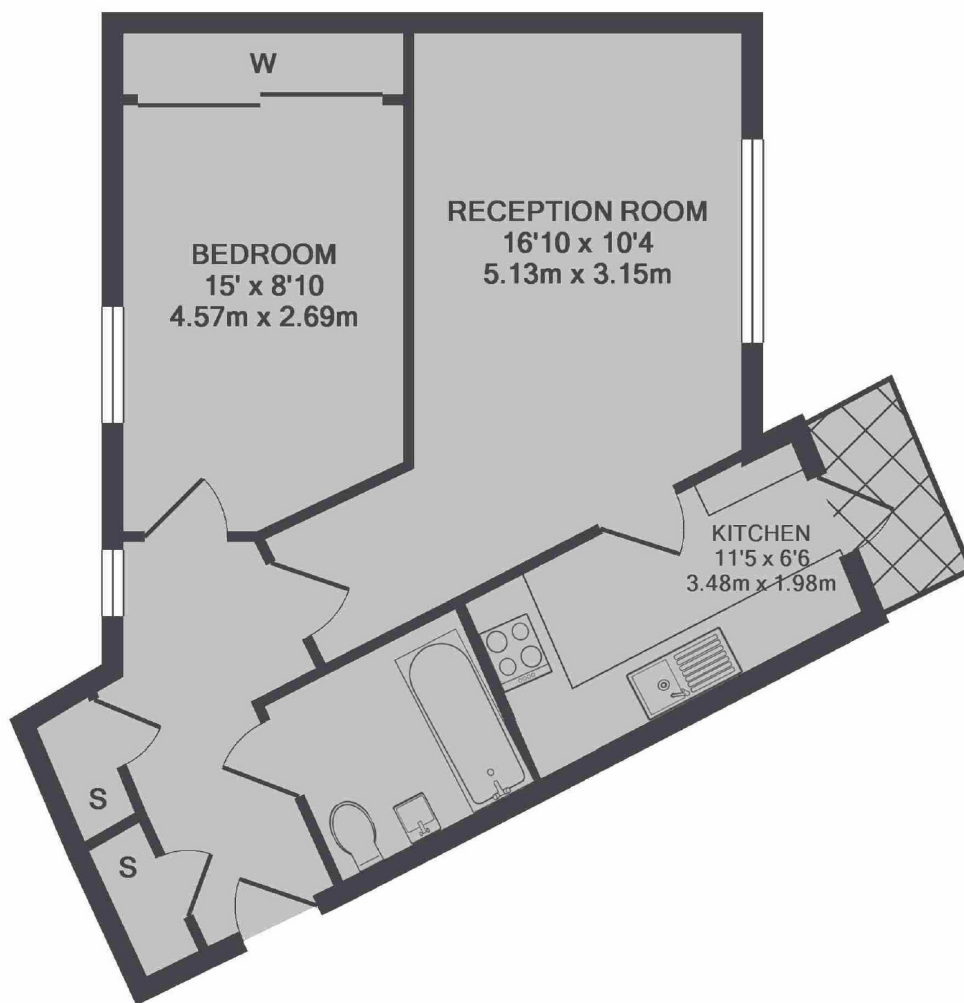
A modern and homely one bedroom new build apartment with picturesque views across the Little Venice Canals. With wooden floors and a private balcony, this spacious property has additional storage, space to dine and lift access.

The property is well placed for access to Maida Vale and Notting Hill, Westbourne Park and Royal Oak tube stations, and the A40 for motorists is nearby.

Features

- Picturesque Views
- Private Balcony
- One Bed
- New Build
- Lift Access
- Wood Floors

Alfred Road, London, W2



TOTAL APPROX. FLOOR AREA 507 SQ.FT. (47.1 SQ.M.)

Dexters

Hyde Park and Bayswater
4-5 Spring Street
London
W2 3RA
Lettings
020 7298 1560

Energy Rating: C. We aim to make our particulars both accurate and reliable. However they are not guaranteed; nor do they form part of an offer or contract. If you require clarification on any points then please contact us, especially if you're traveling some distance to view. Please note that appliances and heating systems have not been tested and therefore no warranties can be given as to their good working order.

 **RICS** | Regulated
Estate Agent
and Letting Agent

[dexters.co.uk](https://www.dexters.co.uk)