



## Lancaster Terrace, W2

**£807** Per week

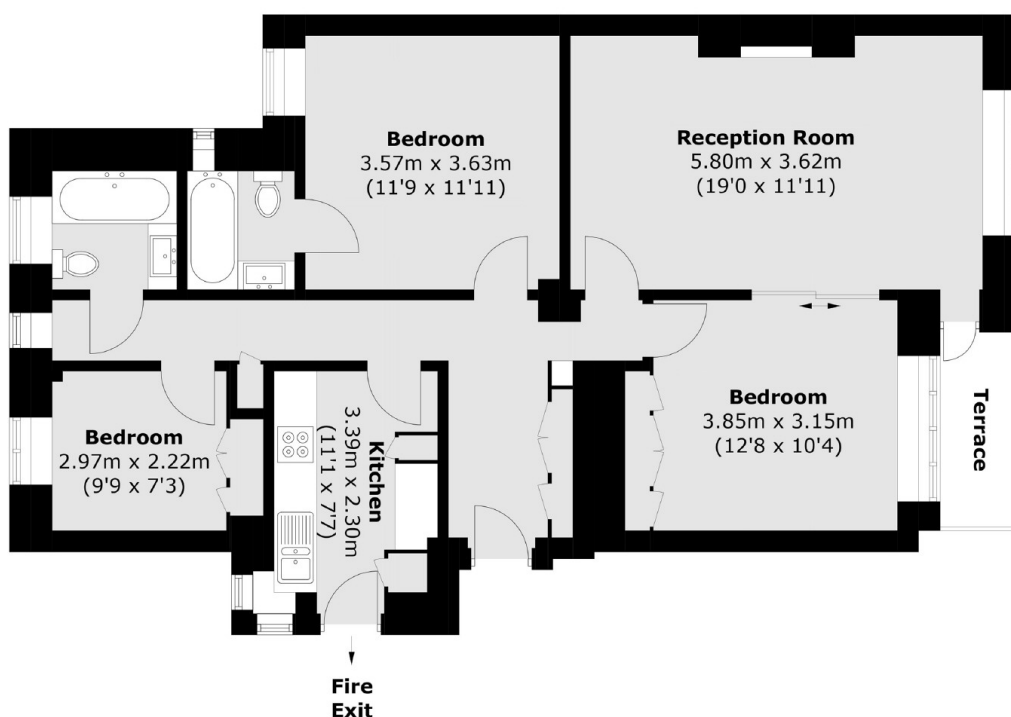
The property boasts a generous reception room with large windows that flood the space with natural light, The separate kitchen is modern and well-equipped, The bedrooms are comfortable doubles, complemented by ample storage one with an en-suite and a separate family bathroom. The building has 24/7 security, lift access and well kept communal. The property has heating and hot water included,

Located on Tyburnia, seconds from the Prestigious Hyde Park and great transport links across London.

### Features

Heating and Hot Water  
Included  
Wooden Floors  
2 Bathrooms  
Porter  
Lift

# Lancaster Terrace, London, W2



Total area (approx.): 86.1 sq. m (926.8 sq. ft)  
Terrace area (approx.): 3.1 sq. m (33.4 sq. ft)