



## Southwick Street, W2

**£575** Per week

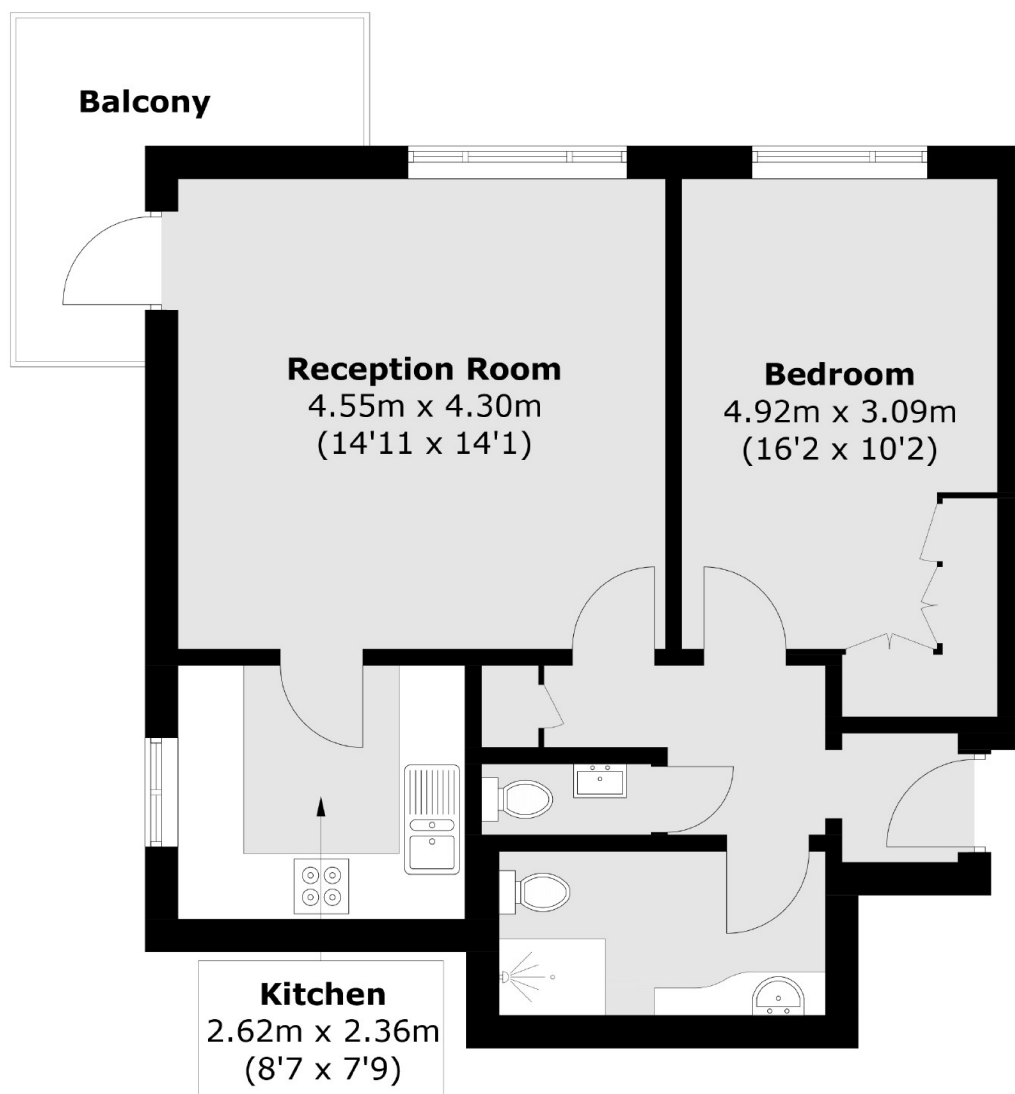
?A modern and recently refurbished one bedroom apartment on the third floor of a portered building with lift access and communal gardens. The property has a large reception with room to dine and is close to Hyde Park and local transport.

?The closest stations are Lancaster Gate and Paddington with access to the Heathrow Express.

### Features

?One Bedroom  
Modern  
Portered  
Lift  
Spacious  
Recently Refurbished

# Southwick Street, London, W2



Total area (approx.): 52.2 sq. m (561.9 sq. ft)  
Balcony: 6.0 sq. m (64.6 sq. ft)