



Sussex Gardens, W2

£550 Per week

A smartly presented third floor one bedroom apartment on the doorstep of Hyde Park. The property has generous sized rooms, wooden flooring, separate kitchen, built in storage and two balconies. Heating and hot water are included.

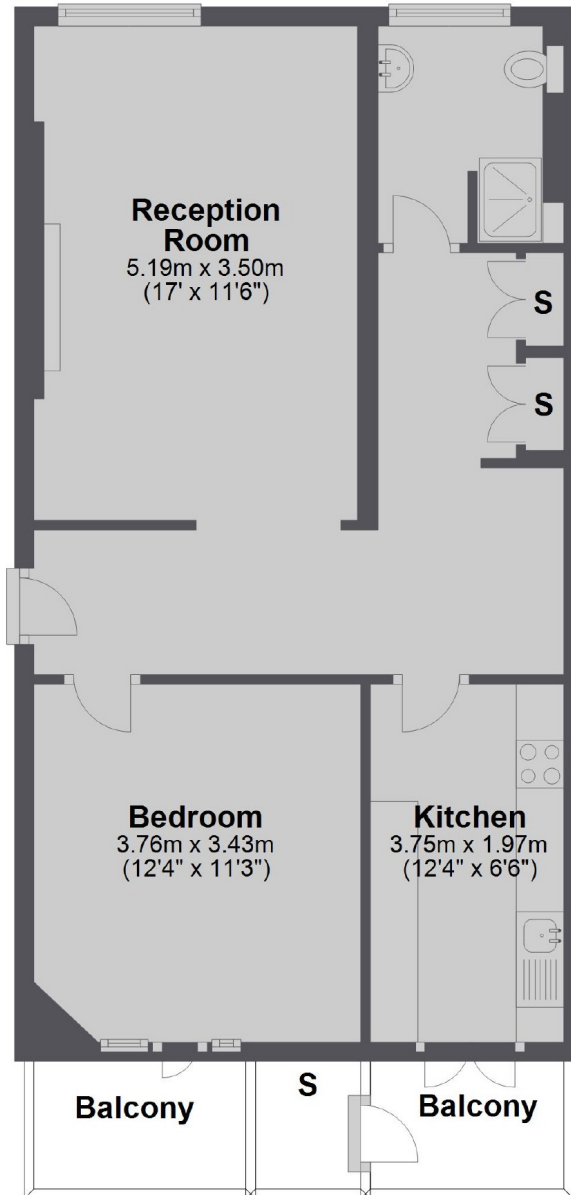
Set within converted Victorian Terrace this property is within easy reach of Lancaster Gate station for the Central Line and Paddington for London Underground, National Rail, Crossrail and Heathrow Express.

Features

- One Bedroom
- Wood Floors
- Two Balconies
- Built-in Storage
- Lift
- Porter

Sussex Gardens, London, W2

Ground Floor



Total area: approx. 59.0 sq. metres (635.3 sq. feet)