



Hyde Park Square, W2

£1,119 Per week

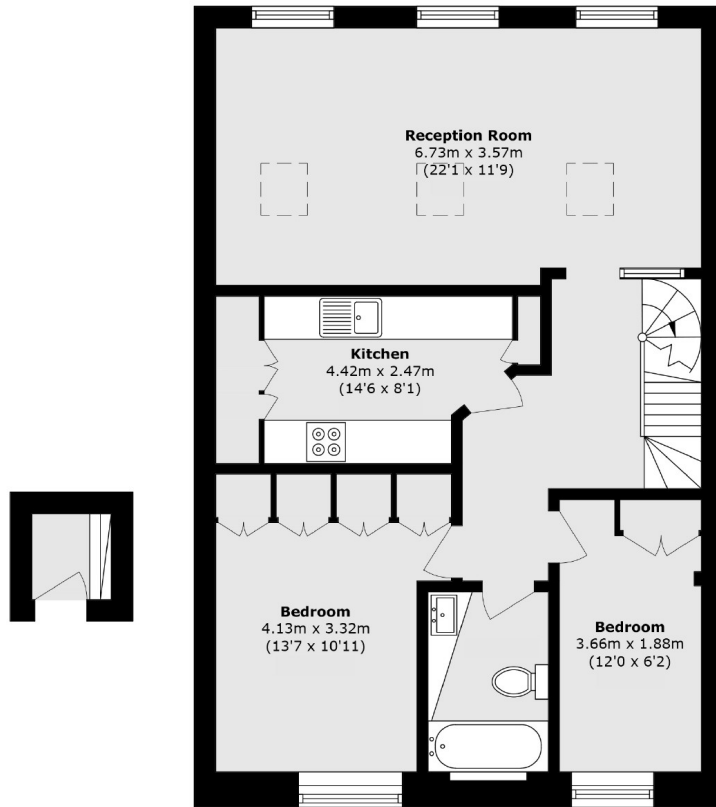
This unique three bedroom duplex loft style apartment is based in the popular Hyde Park Square and has exposed brick work and wooden beams. The property also has access to communal gardens for residents.

Hyde Park Square is moments from Paddington station and the Heathrow Express and within easy reach of Mayfair and the West End.

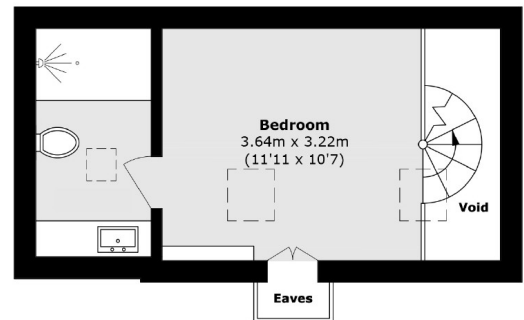
Features

- Three Bedrooms
- Two Bathrooms
- Split Level
- Exposed Brickwork
- Wooden Floors
- Communal Gardens

Hyde Park Square, London, W2



Third Floor



Fifth Floor

Total area (approx.): 92.3 sq. m (993.5 sq. ft)
(Excluding Eaves and Void)