



Porchester Terrace, W2

£1,730 Per week

A bright, well thought out and beautifully finished five bedroom family house with west-facing garden and off-street parking all very centrally located with Hyde Park and Kensington Gardens on the doorstep. The property is arranged over four floors and further comprises a very bright reception room, fitted kitchen leading to conservatory, five great size bedrooms, four bathrooms and a guest cloakroom on the ground floor. Off-street parking.

Porchester Terrace is ideally located for Hyde Park and the restaurants, shops and bars of London's West End, Queensway and Whiteleys shopping and cinema complex. Bayswater (District and Circle lines) and Queensway (Central Line) are the nearest underground stations while British Rail services and the Heathrow Express are accessible via Paddington Station (District, Circle, Bakerloo and Hammersmith and City lines).

Features

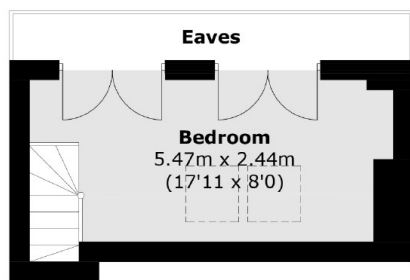
- Moments from Hyde Park
- West facing garden
- High standard
- Off-street parking
- Lots of storage throughout
- Perfectly located



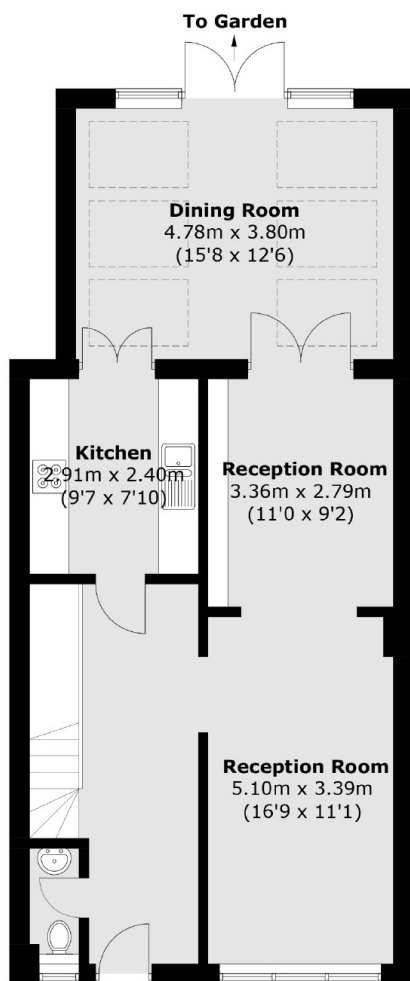
Porchester Terrace, W2



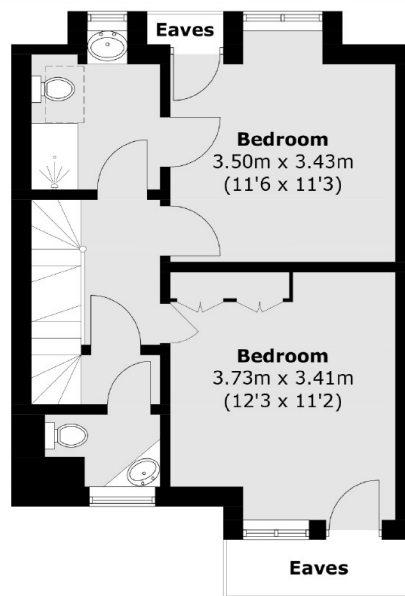
Porchester Terrace, London, W2



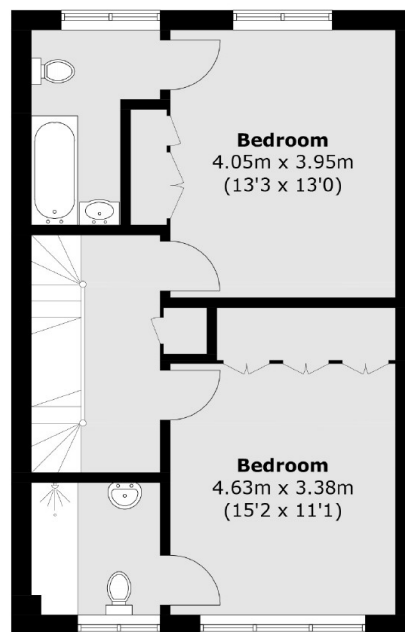
Third Floor



Ground Floor



Second Floor



First Floor

Total area (approx.): 169.2 sq. m (1,821.2 sq. ft)
(Excluding Eaves)

Dexters

Hyde Park and Bayswater
4-5 Spring Street
London
W2 3RA
Lettings
020 7298 1560

Energy Rating: D. We aim to make our particulars both accurate and reliable. However they are not guaranteed; nor do they form part of an offer or contract. If you require clarification on any points then please contact us, especially if you're traveling some distance to view. Please note that appliances and heating systems have not been tested and therefore no warranties can be given as to their good working order.

RICS Regulated
Estate Agent
and Letting Agent

dexters.co.uk