



Westbourne Terrace, W2

£850 Per week

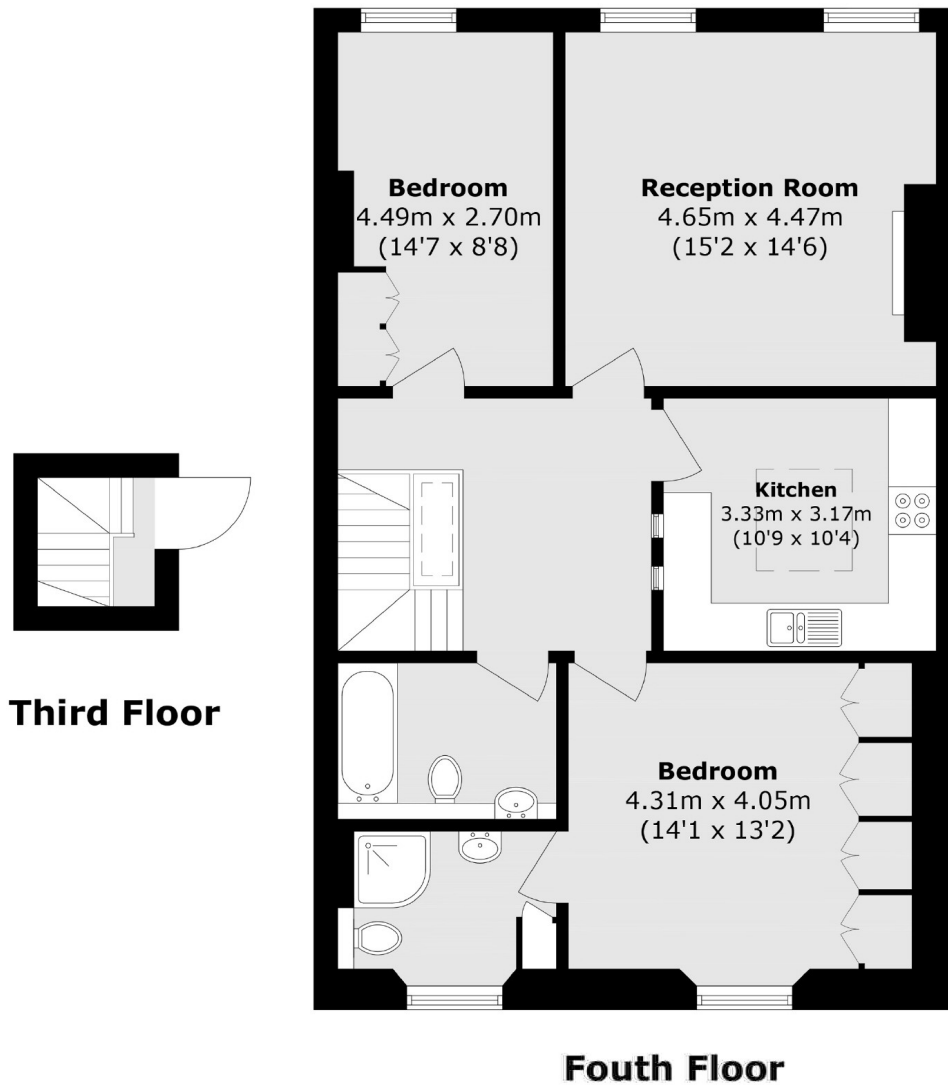
This beautiful top floor has an abundance of space with eat in kitchen, separate dining area and large living room. There is a large bedroom with ensuite, built in storage and quiet views over the mews behind. The second bedroom is large enough for a double bed, desk and storage, the second bathroom is directly across the skylight lit landing.

Perfectly located on Westbourne Terrace just moments from Hyde Park. Ideal for connections across London and around England via trains, tubes and bus.

Features

- Top Floor Flat
- Two Double Bedrooms
- Two Bathrooms
- Furnished
- Bright
- Perfect Location

Westbourne Terrace, London, W2



Total area (approx.): 92.0 sq. m (990.2 sq. ft)