



Stanhope Terrace, W2

£2,300 Per week

Dexters



Stanhope Terrace, W2

This bright and spacious four bedroom town house features a wonderful roof terrace, generous balcony and a great double garage, set in a superb location moments from the beautiful surroundings of Hyde Park.

Spanning four floors, the open plan fitted kitchen and family room with space to dine, study and utility room is found on the lower ground floor with the spacious modern reception on the ground floor.

The principle bedroom, with built in wardrobes, en suite and access to the balcony, is on the first floor with a further two bedrooms on the second floor.

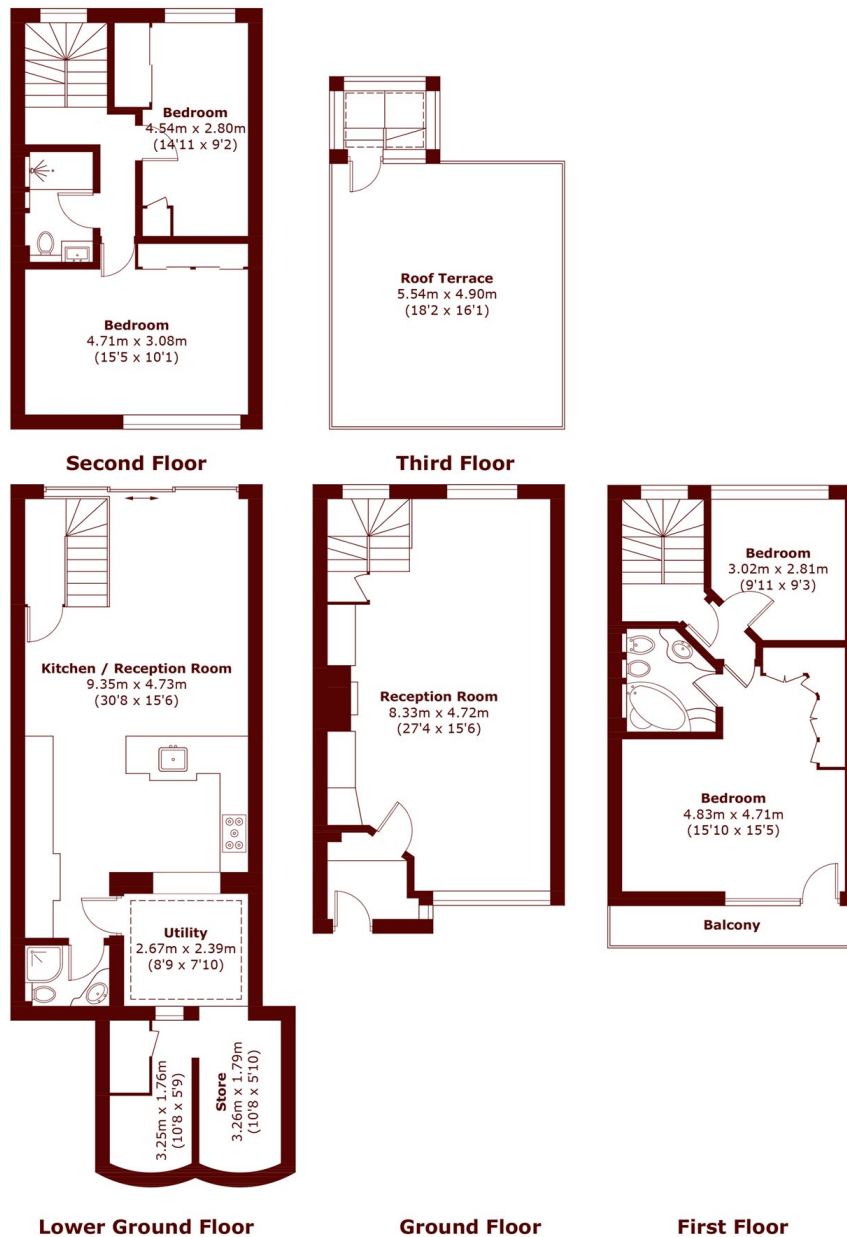
Stanhope Terrace is located next to Hyde Park and is close to the local amenities in Connaught Village while a more comprehensive range of fashionable shops, bars and restaurants can be found on nearby Oxford Street and Edgware Road.

Features

- Four Bedroom
- Townhouse
- Roof Terrace
- Two Receptions
- Hyde Park
- Air Conditioning



Stanhope Terrace, London, W2



Total area (approx.): 187.4 sq. m (2,017 sq. ft)
Roof Terrace / Balcony: 31.9 sq. m (343.4 sq. ft)