

## Sussex Place, W2

£1,384 Per week

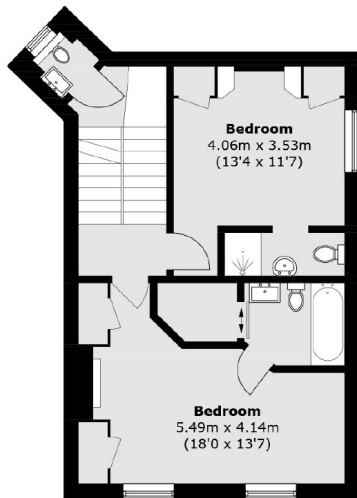
A beautifully presented apartment set within an elegant white stucco-fronted period building in the heart of the Hyde Park Estate. The property features four double bedrooms, three bathrooms, a guest W/C, and a separate utility room. This bright and spacious home is full of period character. The generous reception room boasts high ceilings, wooden floors, and large sash windows that flood the space with natural light.

Ideally positioned moments from Hyde Park and the boutique shops, cafés, and restaurants of Connaught Village. Excellent transport links are close by, including Paddington Station (Elizabeth, Bakerloo, District, Circle, and Hammersmith & City lines, plus Heathrow Express) and Lancaster Gate Underground Station (Central line).

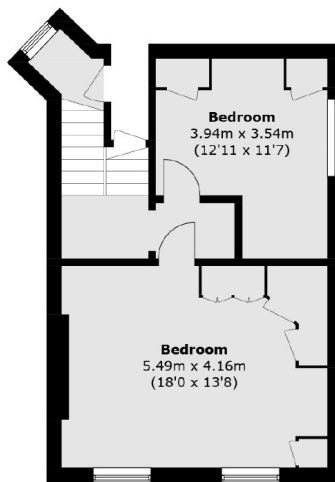
### Features

- Four double bedrooms
- Three bathrooms
- Guest w/c
- Separate Utility
- Moments from Hyde Park
- Period Charms

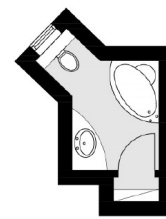
# Sussex Place, London, W2



**Second Floor**



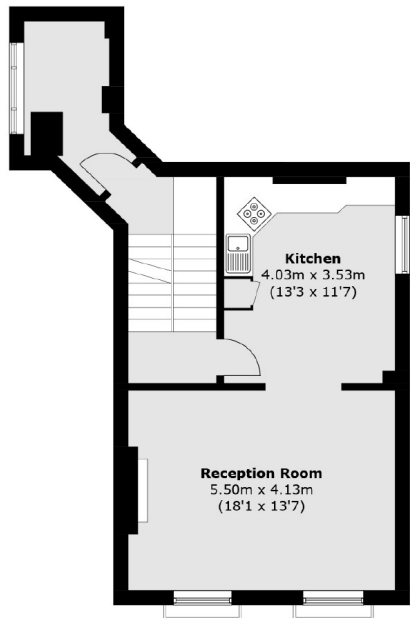
**Third Floor**



**Fourth Floor**



**Ground Floor**



**First Floor**

Total area (approx.): 163.0 sq. m (1,754.5 sq. ft)