



Hyde Park Square, W2

£750 Per week

A large ground floor one bedroom apartment with high ceilings and access to a communal garden square. Layout includes wooden floors, an open plan reception, a modern bathroom and a large bedroom and a separate study.

Hyde Park Square is moments from Paddington station and the Heathrow Express and within easy reach of Mayfair and the West End.

Features

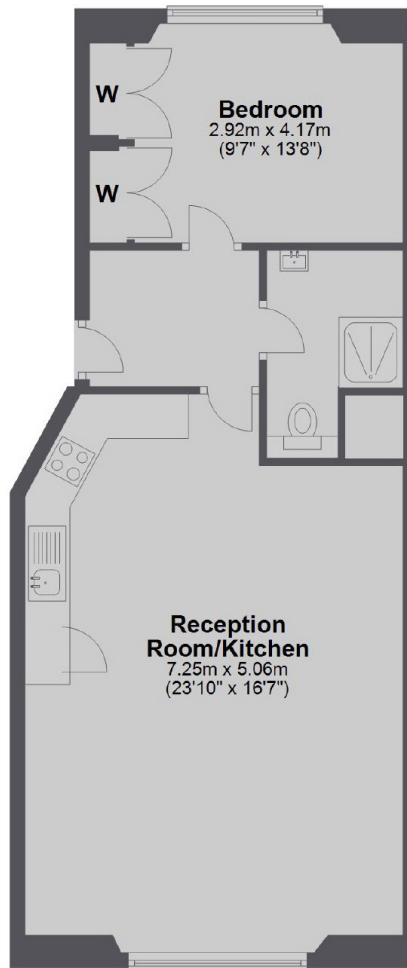
- One Bedroom
- High Ceilings
- Garden Square
- Modern
- Open Plan
- Period Features
- Separate Study

Hyde Park Square, London, W2

Ground Floor



Ground Floor



Main area: Approx. 57.6 sq. metres (620.4 sq. feet)
Plus studio, approx. 13.5 sq. metres (145.4 sq. feet)

Dexters

Hyde Park and Bayswater
4-5 Spring Street
London
W2 3RA
Lettings
020 7298 1560

Energy Rating: C. We aim to make our particulars both accurate and reliable. However they are not guaranteed; nor do they form part of an offer or contract. If you require clarification on any points then please contact us, especially if you're traveling some distance to view. Please note that appliances and heating systems have not been tested and therefore no warranties can be given as to their good working order.

 **RICS** | Regulated
Estate Agent
and Letting Agent

dexters.co.uk