

Stanhope Terrace, W2

£1,904 Per week

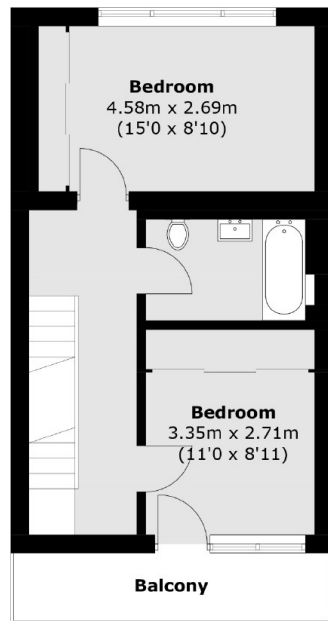
A brand newly refurbished town house located within close proximity to Hyde Park and Lancaster Gate Station. Arranged over four floors the house has four bedrooms, a large reception, three bathrooms and a private garage.

Stanhope Terrace is located within close proximity to Hyde Park and Lancaster Station. The property is also close to local amenities, bars and restaurants.

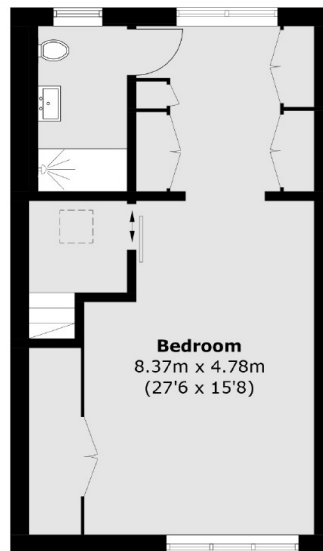
Features

- Four Bedrooms
- Brand Newly Refurbished
- Private Balcony
- Private Garage
- Wood Flooring
- CCTV

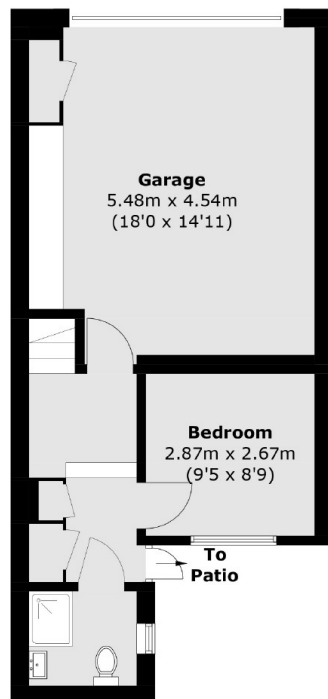
Stanhope Terrace, London, W2



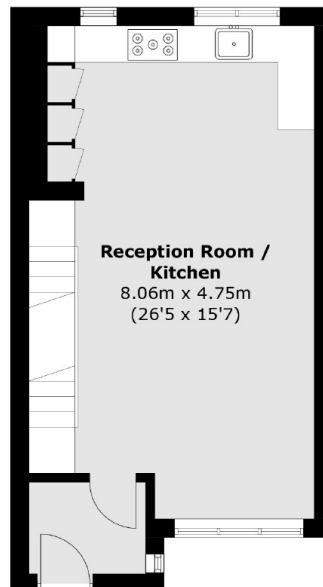
First Floor



Second Floor



Lower Ground Floor



Ground Floor

Total area (approx.): 158.8 sq. m (1,709.3 sq. ft)
Balcony Area : 5.7 sq. m (61.3 sq. ft)