



## Edgware Road, W2

£425 Per week

A stylish studio apartment on the 6th floor (lift) of a portered purpose built block. The property has a separate modern kitchen, wooden flooring, and built in storage.

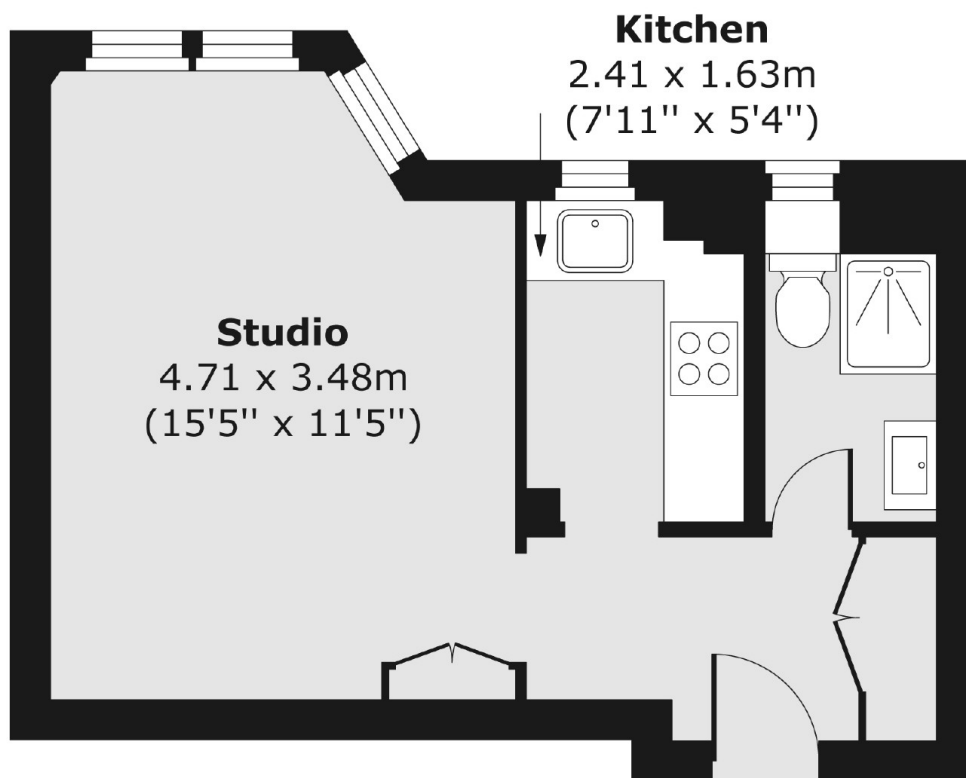
Moments from the shops, bars and restaurants along the Edgware Road, the property is less than a mile from Hyde Park.

### Features

- Studio
- Portered Block
- Lift
- Separate Kitchen
- Hot Water + Heating Included

Edgware Road,  
London, W2

## Sixth Floor



Total area (approx.) 27.11 sq. m (292 sq. ft)