



## Lime Grove, KT3

£4,250 PCM

A four bedroom family home with a spacious open plan kitchen living area, two modern bathrooms, separate WC and ample storage.



Within easy walking distance of New Malden High Street with its mix of cafés, restaurants, shops and mainline station with regular trains to Waterloo.

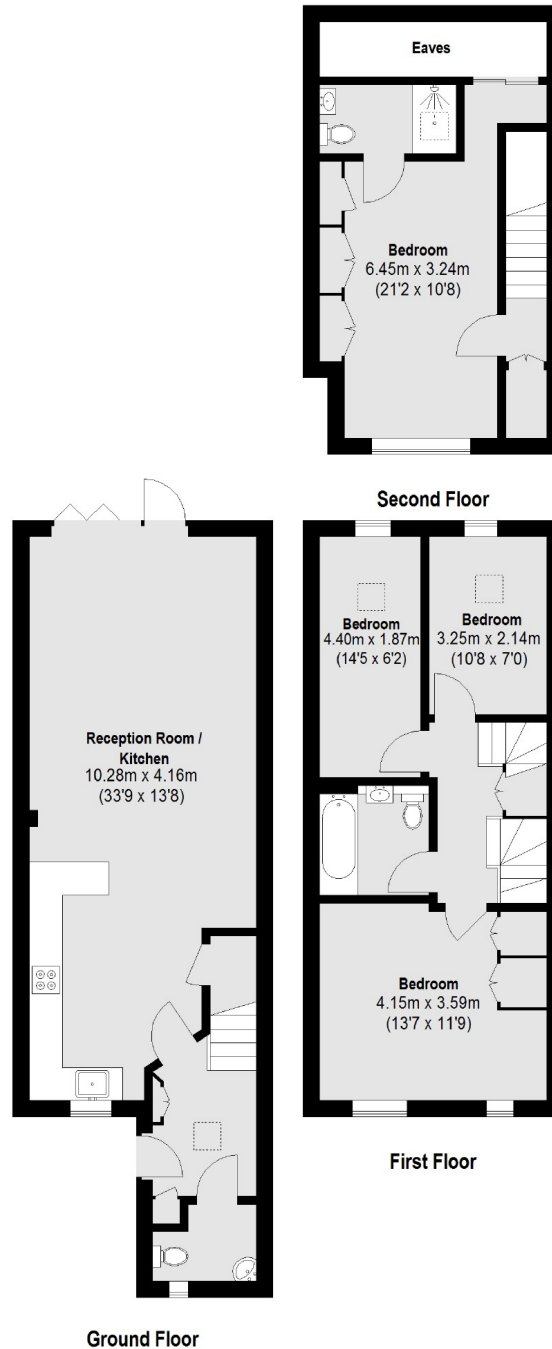
- New Home • Four Bedrooms • Two Bathrooms •
- Open Plan Living • Ample Storage • Parking •





# SNELLERS

ESTATE AGENTS



Total area (approx.): 118.58 sq. m (1276 sq. ft) (Excluding Eaves)

Snellers Kingston Lettings  
17-21 Richmond Road  
Kingston  
KT2 5BW  
020 8546 0505  
[kingstonlettings@snellers.co.uk](mailto:kingstonlettings@snellers.co.uk)

Energy Rating: B We aim to make our particulars both accurate and reliable. However they are not guaranteed; nor do they form part of an offer or contract. If you require clarification on any points then please contact us, especially if you're traveling some distance to view. Please note that appliances and heating systems have not been tested and therefore no warranties can be given as to their good working order