



Arlington Way, EC1R

£4,500 Per calendar month

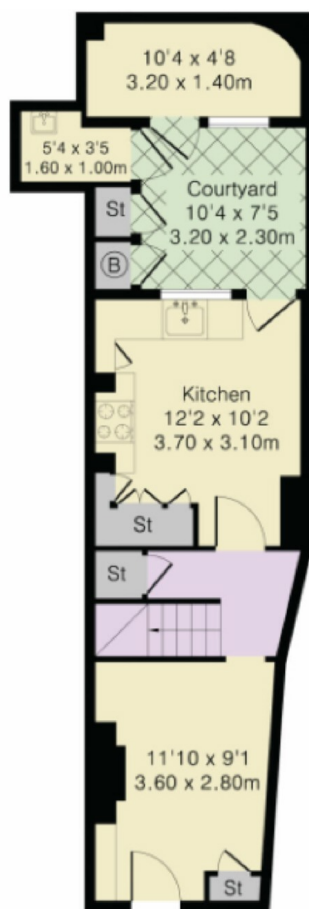
This stunning Victorian terraced townhouse, spread across three floors and nearly 1,300 square feet, presents an incredible opportunity to reside in the heart of prime Islington. It features three spacious bedrooms, two bathrooms with standalone baths, and a newly refurbished study set within a charming patio garden, this home is ideal for both professionals and families. The property is not HMO and is not suitable for three sharers,

Located between Amwell Street & St. John Street, Myddelton Square is under half a mile from Angel tube and Upper Street where there are a selection of bars and restaurants.

Features

Not Suitable for 3 Sharers
Victorian Terraced House
Three Bedrooms
Refurbished Study/Office
High Ceilings
Private Patio
Separate Kitchen

Arlington Way, London, EC1R



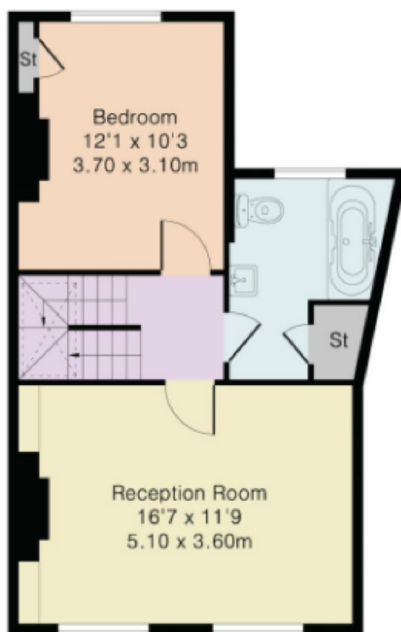
Ground Floor

Approximate Gross Internal Area 1279 sq ft - 119 sq m

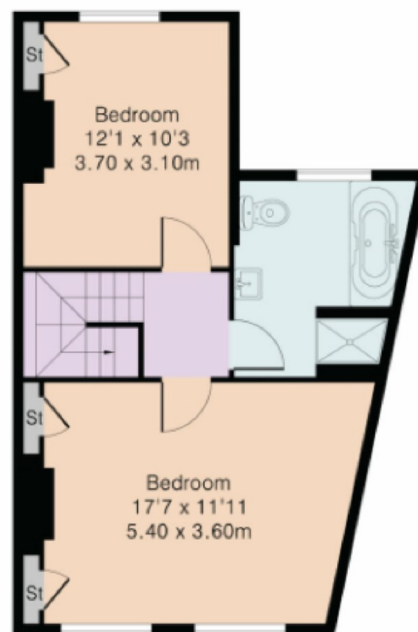
Ground Floor Area 361 sq ft – 34 sq m

First Floor Area 456 sq ft – 42 sq m

Second Floor Area 462 sq ft – 43 sq m



First Floor



Second Floor