



## Jubilee Walk, WC1X

£5,000 Per calendar month

A stunning two bedroom apartment with private balcony, modern bathrooms, open plan kitchen and bespoke features. The corner aspect apartment invites plenty of natural light and views of the City's skyline. Residents' facilities include a pool, spa, cinema, rooftop gardens, gym and a function room.

The property is well connected for the amenities of King's Cross, Farringdon and Russell Square and it is uniquely placed for easy access into the City and the West End.

### Features

- Two Double Bedrooms
- Private Balcony
- Over 1,000sqft
- Bespoke Features
- Gym with Pool and Spa
- Communal Gardens
- 24hrs Concierge

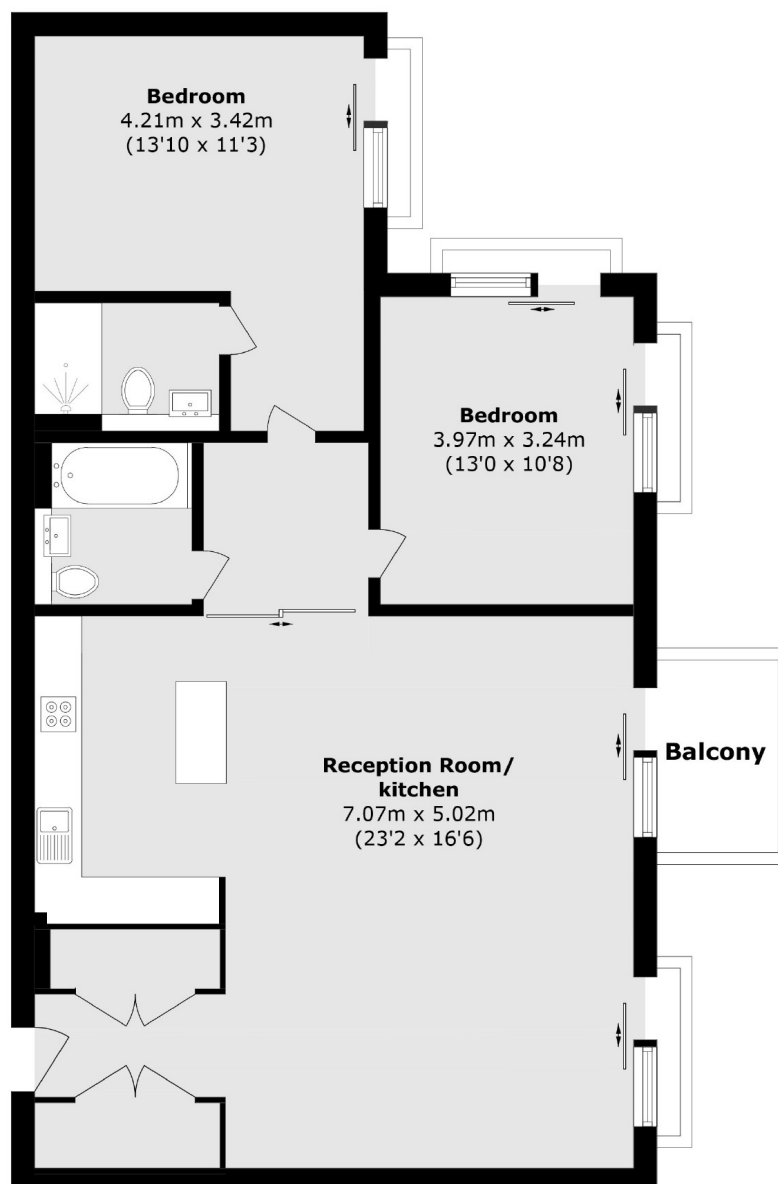


## Jubilee Walk, WC1X

From the carefully chosen interiors designed to feel stylish but homely, to the private balconies and terraces. The Postmark invites relaxation, offers entertainment and welcomes guests.



# Jubilee Walk, London, WC1X



Total area (approx.): 99.5 sq. m (1071.0 sq. ft)

Balcony area (approx.): 3.8 sq. m (40.9 sq. ft)

## Dexters

Clerkenwell  
1b Britton St  
London  
EC1M 5NW  
Lettings  
020 7483 6370

Energy Rating: . We aim to make our particulars both accurate and reliable. However they are not guaranteed; nor do they form part of an offer or contract. If you require clarification on any points then please contact us, especially if you're traveling some distance to view. Please note that appliances and heating systems have not been tested and therefore no warranties can be given as to their good working order.

 **RICS** | Regulated  
Estate Agent  
and Letting Agent

[dexters.co.uk](http://dexters.co.uk)