



## Thomas More House, EC2Y

£3,150 Per calendar month

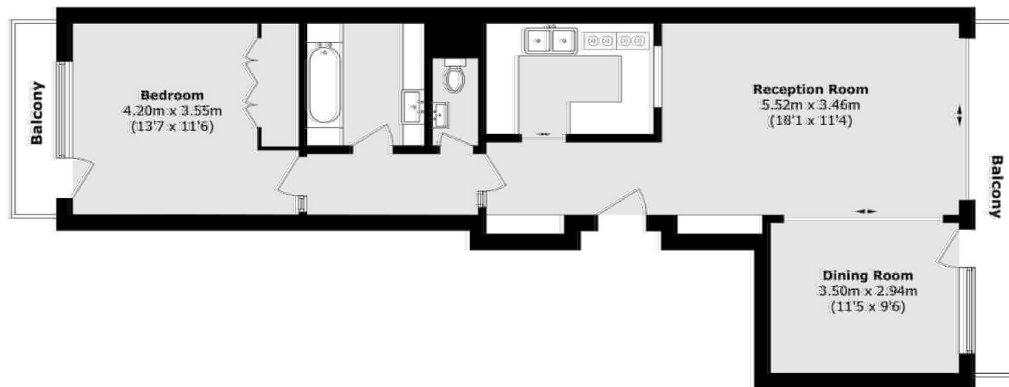
A spacious one bedroom apartment with an additional room great as a home office or guest room. The iconic Barbican Estate benefits from a private south-facing balcony, with views of the communal grounds and gardens. The layout includes a separate kitchen and lots storage.

The Barbican Estate is renowned for its architectural significance and vibrant cultural amenities including the Barbican Arts Centre, cinemas, theatre, concert hall, restaurants, and cafes. You'll also find Waitrose, M&S, and Tesco just moments away, and transport links are exceptional: Elizabeth Line at Farringdon and Liverpool Street, plus Barbican, Moorgate, and St Paul's stations all within easy reach offering direct routes to both Heathrow and Gatwick airports.

### Features

- One Bedroom with Study
- Wooden Floors
- Private Balcony
- 24hr Porter
- Grade II Listed
- Communal Gardens

# Thomas More House, London, EC2Y



Total area (approx.): 68.8 sq. m (740.6 sq. ft)

Balcony area (approx.): 7.7 sq. m (82.8 sq. ft)