



Paragon Square, WC1X

£3,500 Per calendar month

Dexters



Paragon Square, WC1X

A unique, one double bedroom home located on the top floor with a private roof terrace spanning over 500 sq ft. There is a fully integrated kitchen with built-in Siemens appliances opening up to a living/dining room, high ceilings, built in bedroom storage and a family bathroom.

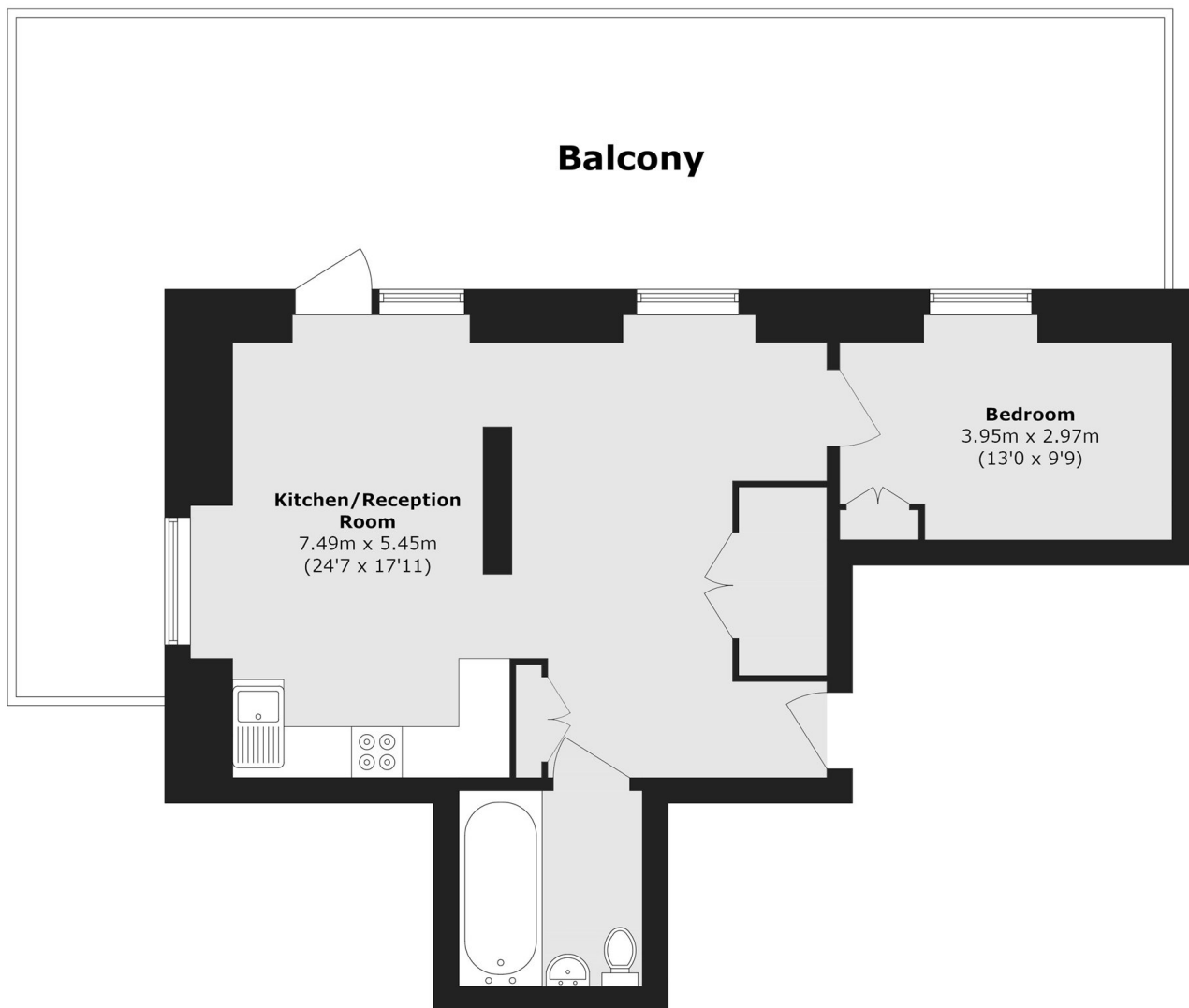
The Postmark is a vibrant new development nestled between Bloomsbury and Clerkenwell, just 0.7 miles from King's Cross St.Pancras. The closest underground station is Russell Square and there are numerous shopping outlets on the doorstep.

Features

- One Bed Penthouse
- Large Roof Terrace
- High ceilings
- 24 Hour Concierge
- Gym, Spa and Lounge



Paragon Square, London, WC1X



Total area (approx.): 56.8 sq. m (611.3 sq. ft)

Balcony area (approx.): 51.6 sq. m (555.4 sq. ft)

Dexters

Clerkenwell
1b Britton St
London
EC1M 5NW
Lettings
020 7483 6370

Energy Rating: B. We aim to make our particulars both accurate and reliable. However they are not guaranteed; nor do they form part of an offer or contract. If you require clarification on any points then please contact us, especially if you're traveling some distance to view. Please note that appliances and heating systems have not been tested and therefore no warranties can be given as to their good working order.

 **RICS** | Regulated
Estate Agent
and Letting Agent

[dexters.co.uk](https://www.dexters.co.uk)