



Hardwicke Mews, WC1X

£4,750 Per calendar month

A beautiful loft style two bedroom, two bathroom apartment with double height ceilings, set within a private gated mews in the Lloyd Baker Estate. Converted from stables, Hardwicke Mews is a highly sought after residential development.

The nearest public transport links are Angel Station (London Underground Northern Line) and King's Cross Station (Northern, Victoria, Piccadilly, Circle, Hammersmith & City and Metropolitan lines).

Features

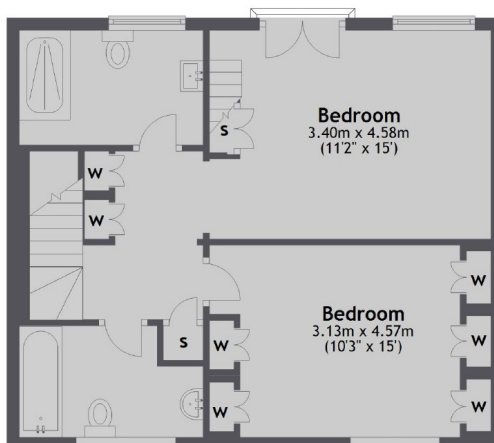
- Mews House
- High Ceilings
- Large Reception room
- Close to Exmouth Market
- Gated Mews Development

Hardwicke Mews, London, WC1X

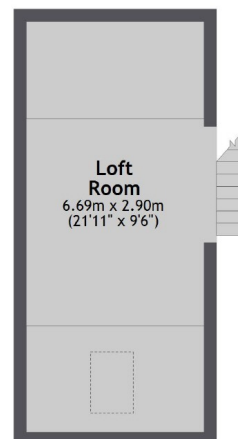
Ground Floor



First Floor



Second Floor



Total area: approx. 118.7 sq. metres (1277.8 sq. feet)