



## Dingley Road, EC1V

£4,000 Per calendar month

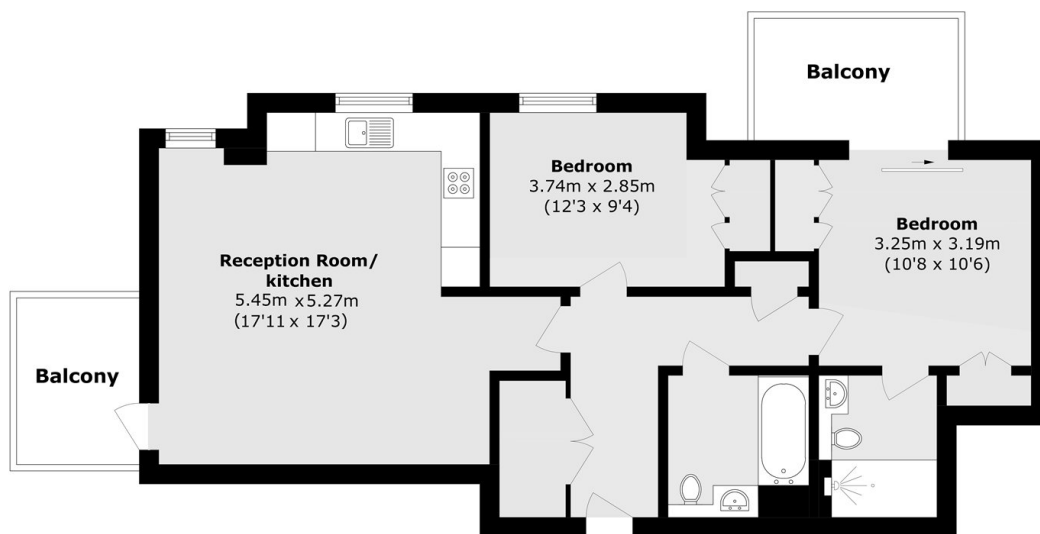
This luxury apartment is the latest release of the 250 City Road development. It features an expansive open-plan living area seamlessly integrated with a modern kitchen suite, complete with high-end appliances and access to a large balcony. Throughout the apartment, full-height windows and residents can enjoy access to a wealth of top-notch amenities, including a stylish lounge, gym, pool and spa.

Bollinder Place enjoys a prime location and offers residents swift and convenient access to both the City and Central London..

### Features

- Two Bedrooms
- Two Bathrooms
- Two Private Balconies
- 24 Hour Concierge
- Pool, Gym & Spa
- Comfort Cooling

# Dingley Road, London, EC1V



Total area (approx.): 72.9 sq. m (784.6 sq. ft)  
Balcony area (approx.): 10.8 sq. m (116.2 sq. ft)