



## Jubilee Walk, WC1X

£4,500 Per calendar month

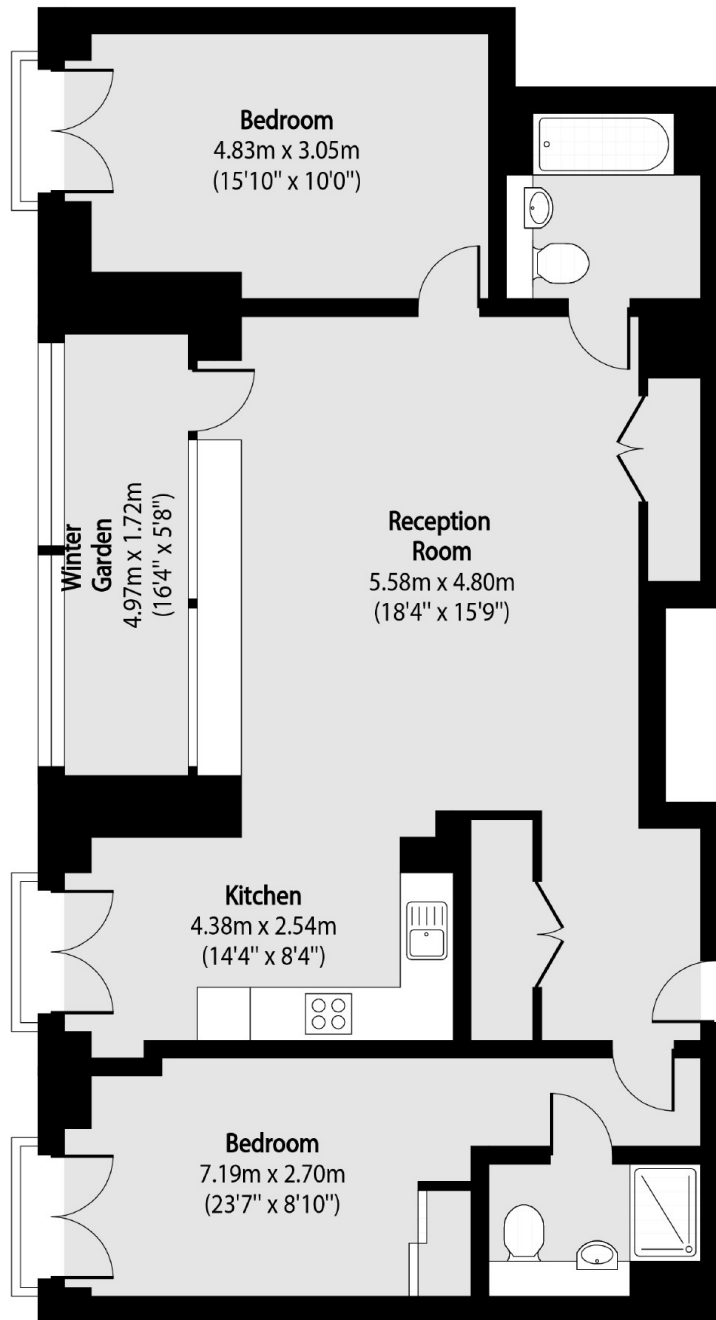
This spacious 2 bed apartment is over 1,000 sqft and includes a bright reception room, semi open-plan kitchen with space for dining. Both bedrooms have good storage and floor-to-ceiling windows, while the apartment also offers two modern bathrooms. One of the apartment's highlights is the large private winter garden. With its glass panels that can be opened or closed, it's the ideal space to enjoy all year round.

In one of the worlds most important financial hubs, the Postmark stands out for all the right reasons. From the carefully chosen interiors designed to feel like an intimate members club to the private balconies and terraces. The Postmark invites relaxation, offers entertainment and welcomes guests.

### Features

- Two Bedrooms
- Two Bathrooms
- 1056 sqft / 98.19 sqm
- Winter Garden
- Communal Gardens
- 24 hour Concierge

# Jubilee Walk, London, WC1X



Total area (approx): 98.19 sq m (1056 sq. ft)

## Dexters

Clerkenwell  
1b Britton St  
London  
EC1M 5NW  
Lettings  
020 7483 6370

Energy Rating: . We aim to make our particulars both accurate and reliable. However they are not guaranteed; nor do they form part of an offer or contract. If you require clarification on any points then please contact us, especially if you're traveling some distance to view. Please note that appliances and heating systems have not been tested and therefore no warranties can be given as to their good working order.

 **RICS** | Regulated  
Estate Agent  
and Letting Agent

[dexters.co.uk](https://www.dexters.co.uk)