



Russell Road, TW17  
£500,000

Waterview  




A stunning two double bedroom ground floor apartment in this imposing Edwardian block with commanding south facing river views and access to communal grounds next to the River Thames.

Russell Road runs parallel to the Thames at Shepperton with the popular Red Lion Pub nearby.







Accommodation is made up of a large modern reception room with original cornicing and large bay windows overlooking the river. The large principal has built-in storage and views over the private communal grounds to the rear of the block. There is also a second double bedroom with river views, a modern fully fitted kitchen and stylish family bathroom.

There are only four flats within the this beautiful block. This flat also has access to a 100ft residents riverside garden with summerhouse and far reaching views of The Thames and Desborough Island. This flat also comes with a 23ft deep river mooring available.

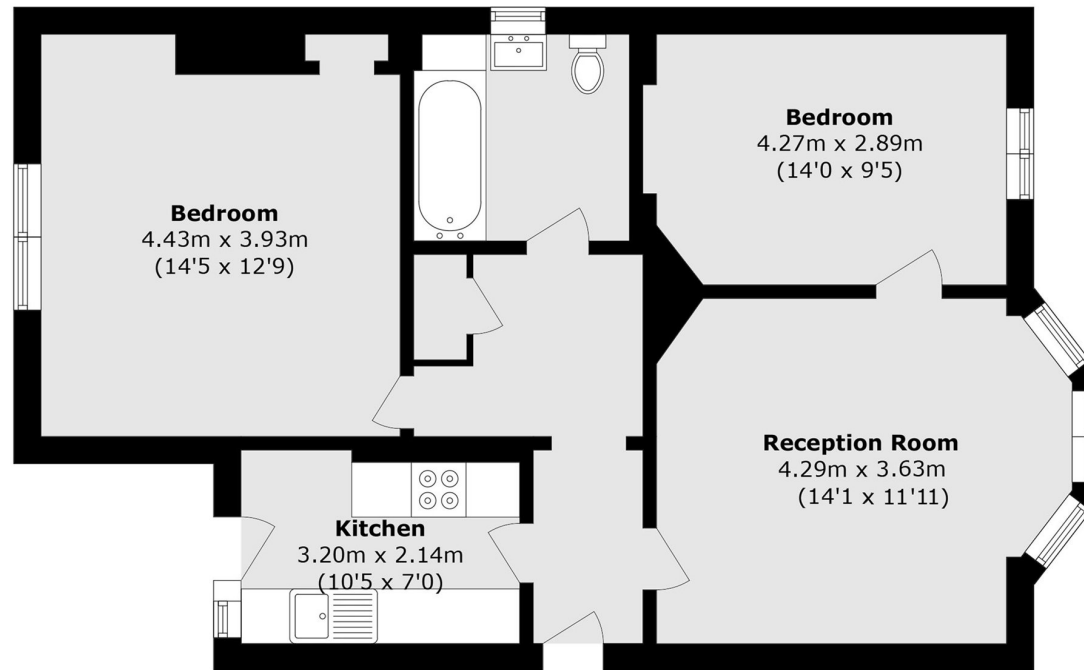
### Features

Edwardian Block  
South Facing  
Two Bedrooms  
Private Gardens  
River Views  
23ft Mooring Available





# Russell Road, Shepperton, TW17



Total area (approx.): 68.8 sq m (740.6 sq ft)

## Contact

To arrange a viewing call our office on the number below or visit our website.



Energy Rating: D. We aim to make our particulars both accurate and reliable. However they are not guaranteed; nor do they form part of an offer or contract. If you require clarification on any points then please contact us, especially if you're traveling some distance to view. Please note that appliances and heating systems have not been tested and therefore no warranties can be given as to their good working order.



