



Clarence Street, TW18

£280,000

Waterview

An absolutely stunning and spacious one double bedroom flat set in this prestigious riverside development by The Thames.

Clarence Street runs parallel to the river through the town centre of Staines-upon-Thames.





Accommodation is made up of large entrance hall and study area leading to an impressive 26' open plan living space with stylish decor and modern kitchen.

The generous principal bedroom has a range of built-in wardrobes and access to a private balcony. There is a luxury bathroom.

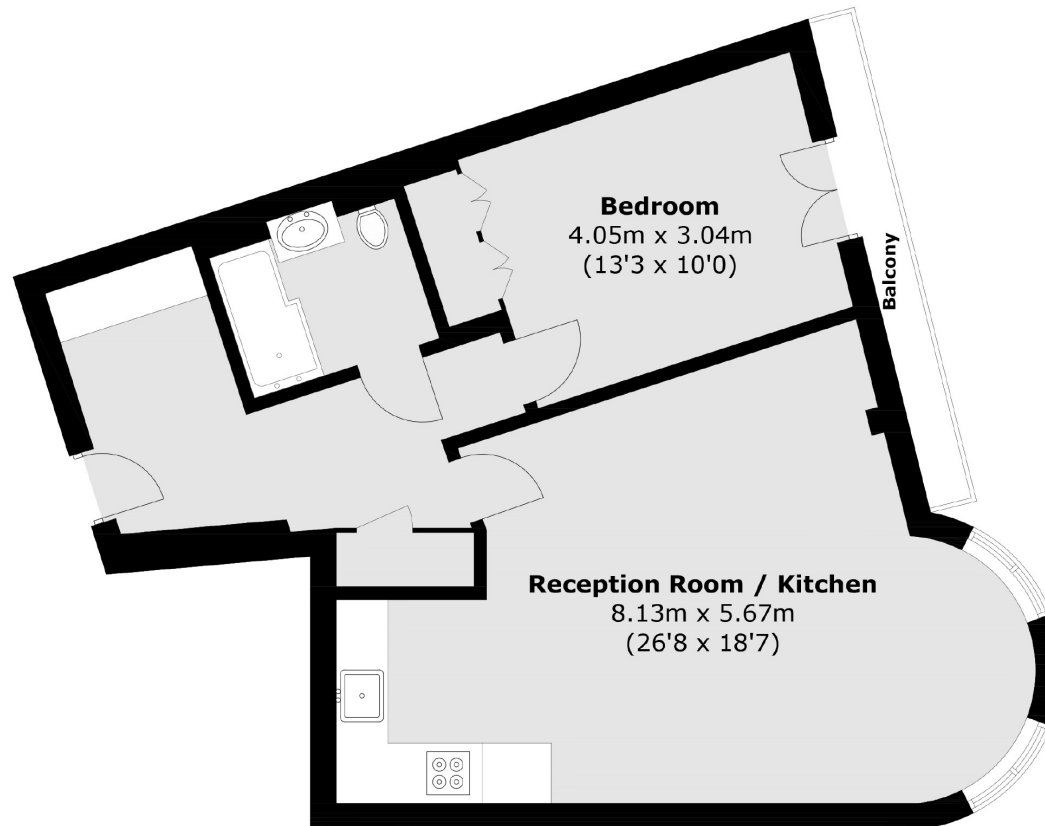
The apartment is set in this lift serviced block with on-site concierge, riverside terrace and secure underground parking.

Features

Stunning Apartment
683 sq ft
Prestigious Development
Riverside
Concierge
Secure Parking



Clarence Street,
Staines upon Thames, TW18



Total area (approx.): 63.5 sq. m (683.5 sq. ft)
Balcony area : 2.9 sq. m (31.2 sq. ft)

Contact

To arrange a viewing call our office on the number below or visit our website.



Energy Rating: C. We aim to make our particulars both accurate and reliable. However they are not guaranteed; nor do they form part of an offer or contract. If you require clarification on any points then please contact us, especially if you're traveling some distance to view. Please note that appliances and heating systems have not been tested and therefore no warranties can be given as to their good working order.

