



Riverside, TW18

£3,450 pcm

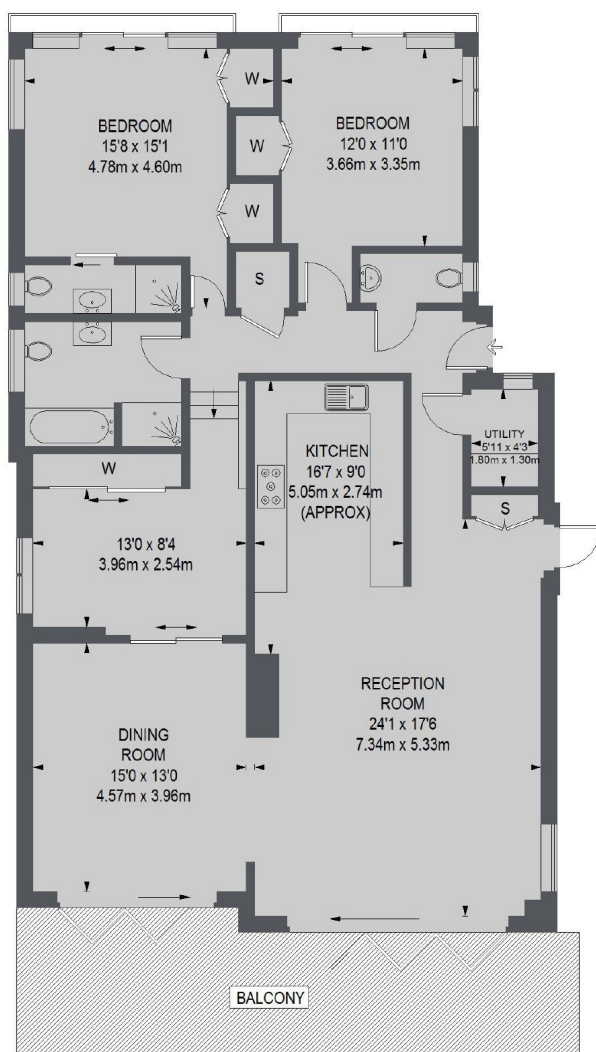
This very unique and ultra modern three bedroom riverside home has everything you need. With views over the river Thames.

Located on Riverside in Staines, this house is raised well above the flood line and has direct river access with exception river views.

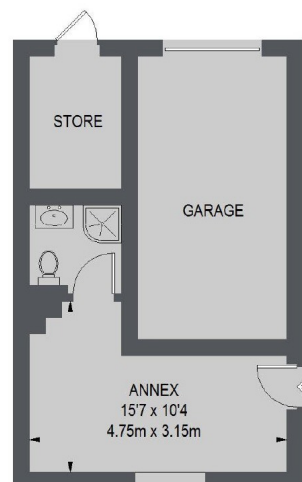
Features

- Three Bedrooms
- 50 ft Private Mooring
- Separate Studio/Office
- Private Garden
- Exceptional River Views
- Large Garden

Riverside, Staines-Upon-Thames, TW18



RAISED GROUND FLOOR



(NOT SHOWN IN ACTUAL
LOCATION / ORIENTATION)
GROUND FLOOR

TOTAL APPROX. FLOOR AREA
1546 SQ. FT. (143.65 SQ. M.)
OUTBUILDING = 399 SQ. FT. (37.1 SQ. M.)

Contact

To arrange a viewing call our office on the number below or visit our website.



Energy Rating: C. We aim to make our particulars both accurate and reliable. However they are not guaranteed; nor do they form part of an offer or contract. If you require clarification on any points then please contact us, especially if you're traveling some distance to view. Please note that appliances and heating systems have not been tested and therefore no warranties can be given as to their good working order.