



Ham Island, SL4  
£795,000

Waterview



A beautifully presented, three/four bedroom riverside home with pretty gardens, heated swimming pool and approx 50ft of river frontage.

Ham Island runs parallel to The Thames in this idyllic rural setting in Old Windsor.





Accommodation is made up of entrance hall, leading to a bright and spacious double reception room with feature fireplace and French doors to the garden. There is a stylish modern kitchen/breakfast room which overlooks the garden and a stunning family dining room. Also on the ground floor is a bespoke fitted home office, that could be converted to a fourth bedroom and W.C.

On the first floor the master suite overlooks the gardens and river with built-in wardrobes and air conditioning. There are two further bedrooms, and a well appointed four piece family bathroom. Opposite the front of the house is a large gravel driveway with parking for several cars leading to a double garage.

To the rear a beautifully landscaped, South West facing garden incorporates a decked entertaining area, patio, hot tub, heated swimming pool with lawned area leading to riverside terrace with fantastic river views.

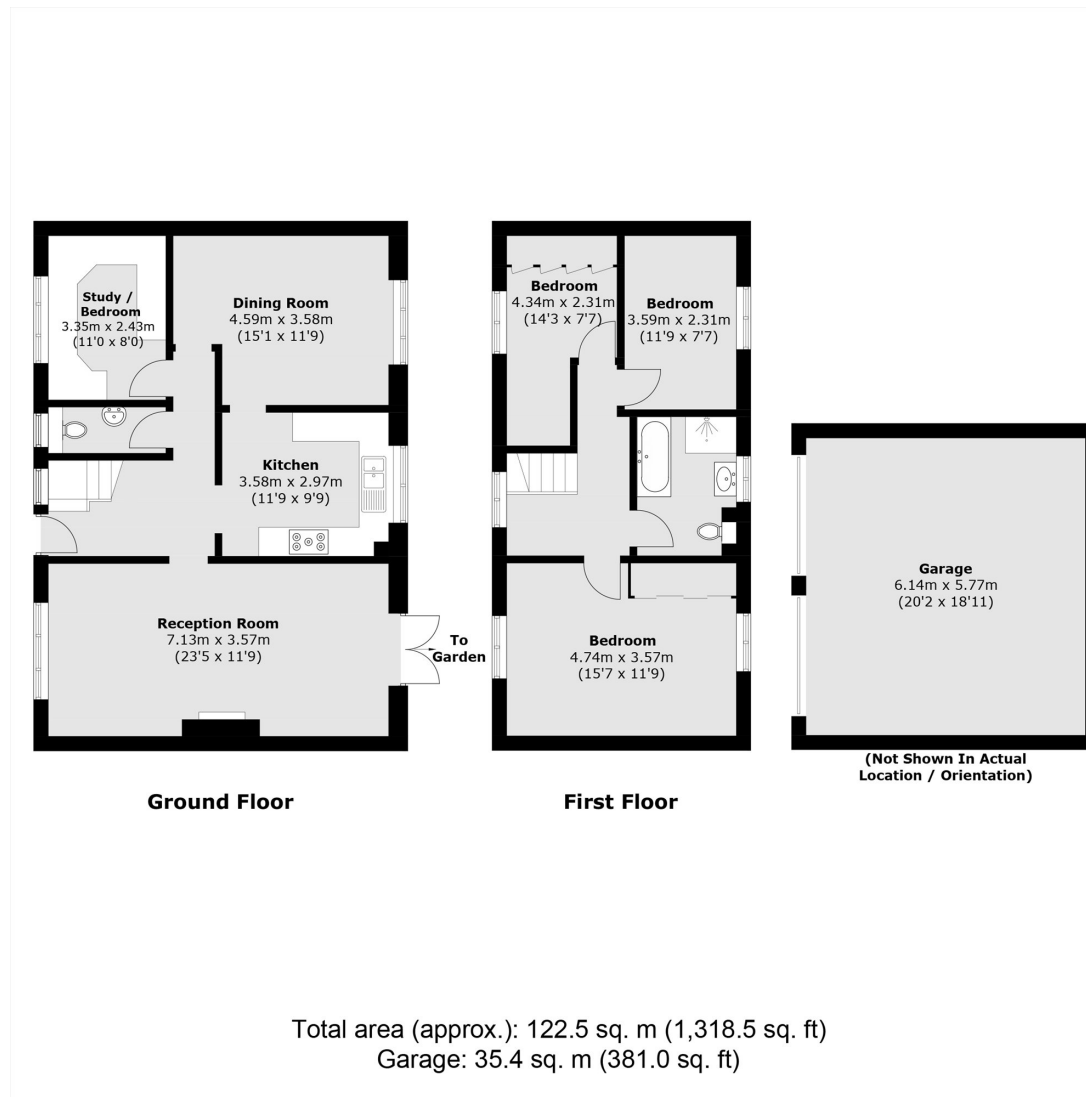
### Features

Beautiful House  
Riverside  
Stylish Interiors  
Swimming Pool  
South West Facing  
Double Garage





# Ham Island, Windsor, SL4



## Contact

To arrange a viewing call our office on the number below or visit our website.



Energy Rating: C. We aim to make our particulars both accurate and reliable. However they are not guaranteed; nor do they form part of an offer or contract. If you require clarification on any points then please contact us, especially if you're traveling some distance to view. Please note that appliances and heating systems have not been tested and therefore no warranties can be given as to their good working order.



