



St. Peters Close, TW18

£5,995 Per calendar month

Dexters



St. Peters Close, TW18

This exceptional four bedroom riverside home offers a rare opportunity to live in one of the area's most picturesque settings. Blending period character with contemporary design, this home is perfectly set up for modern living whilst retaining all its charm.

This riverside home features new double glazed windows, coded security gates, a driveway for up to four cars and two electric car-charging points.

The house is ideal for both family life and entertaining, with a versatile layout downstairs. Outside, you will find a riverside garden plus a separate rear garden. The main house also benefits from air-conditioning for year-round comfort. The impressive primary suite and further double bedroom also enjoys direct access to the balcony, offering breathtaking river views every morning.

A major highlight is the fully equipped garden studio, complete with heating, Wi-Fi, electrics and a kitchenette perfect as a home office or guest space.

The location is excellent, just a short walk from Staines Station (35 minutes to Waterloo) and close to Staines Town Centre. This home beautifully balances character, modern living and an unbeatable riverside position.

Features

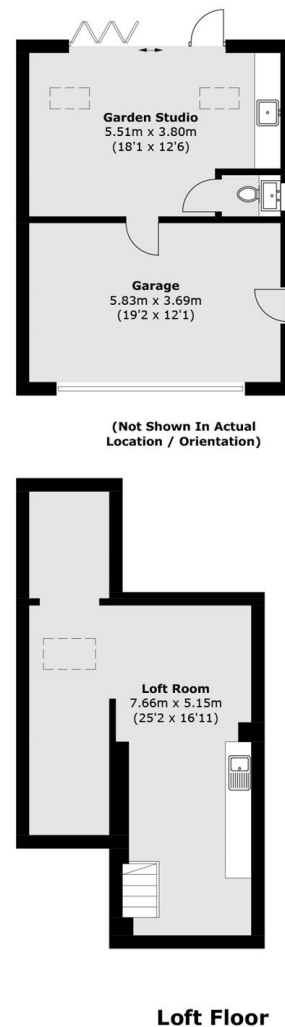
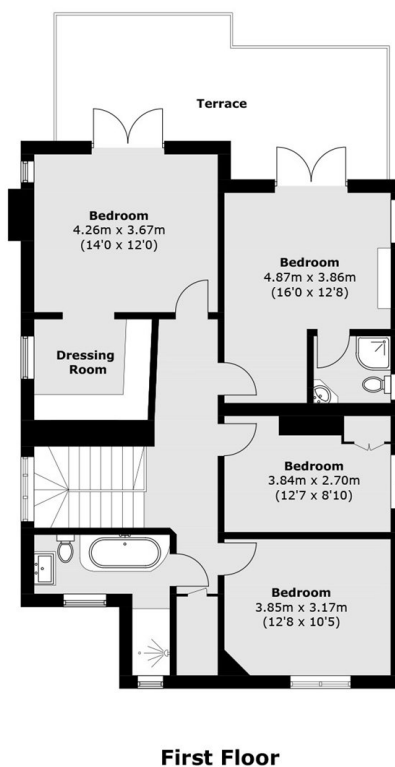
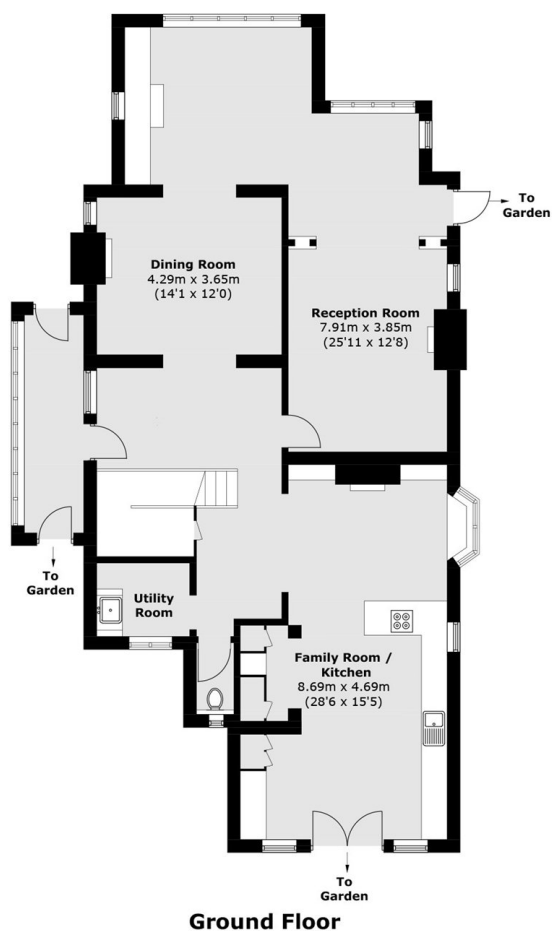
- Four Bedrooms
- Three Reception Rooms
- Stunning River Views
- Driveway
- Garden Studio
- Front & Back Gardens







St. Peters Close, Staines-Upon-Thames, TW18



Total area (approx.): 270.3 sq. m (2909.4 sq. ft)
 Outbuilding area (approx.): 45.2 sq. m (486.5 sq. ft)
 Terrace area : 22.9 sq. m (246.5 sq. ft)