



Chertsey Road, TW17

£420,000

Waterview

A beautiful, recently refurbished 70ft two storey house boat. Moored on this picturesque stretch of The Thames with a meadow and secure resident's parking.

Chertsey Road runs parallel to The Thames between the villages of Shepperton and Chertsey.





On the lower level accommodation is made up of an impressive large principal bedroom with triple aspect river views and en-suite.

There is a further double bedroom, further single bedroom and a family shower room.

On the upper level the 20ft double reception room offers stunning triple aspect views of the river with two sets of French doors to an outdoor entertaining area. There is a stylish modern kitchen and breakfast area. On the lower area there are fore and aft decked areas to sit and enjoy the river with a further upper deck terrace.

Ryepeck Mooring is a secure gated development of residential riverside house boats with a beautiful adjoining orchard and parking.

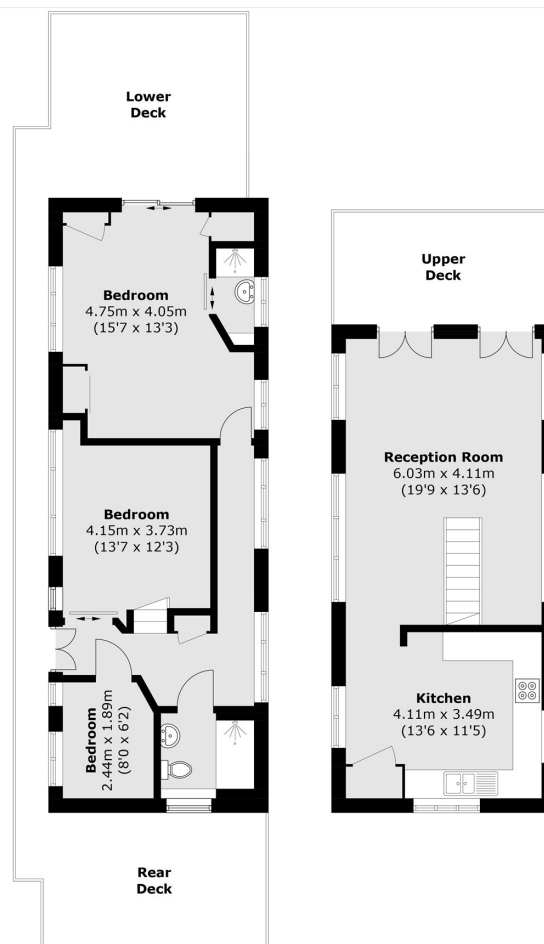
Mooring charges are £1,106 pcm on a rolling contract.

Features

Beautiful Houseboat
Fully Refurbished
Stylish Interiors
Three Bedrooms
River Views
Resident's Parking



Chertsey Road, Shepperton, TW17



Lower Ground Floor Upper Ground Floor

Total area (approx.): 89.9 sq. m (967.7 sq. ft)

Contact

To arrange a viewing call our office on the number below or visit our website.



Energy Rating: . We aim to make our particulars both accurate and reliable. However they are not guaranteed; nor do they form part of an offer or contract. If you require clarification on any points then please contact us, especially if you're traveling some distance to view. Please note that appliances and heating systems have not been tested and therefore no warranties can be given as to their good working order.

