



Millbourne Road, TW13

£469,950

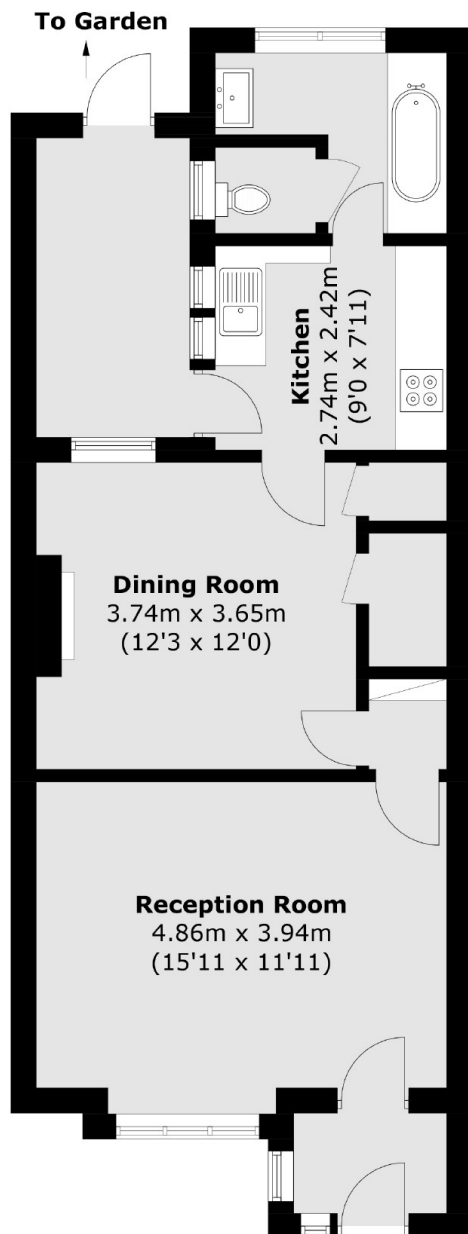
Offered with no onward chain, this spacious four-bedroom semi-detached home is ready to move into. It also offers a fantastic opportunity to modernise and personalise, with further potential to extend (STPP) and truly make it your own.

Millbourne Road is a quiet road perfectly situated on the Hampton/Hanworth borders. Houses like this normally attract couples, families and investors. Ideal for easy access to the A316, Heathrow and local bus routes are at the end of the road.

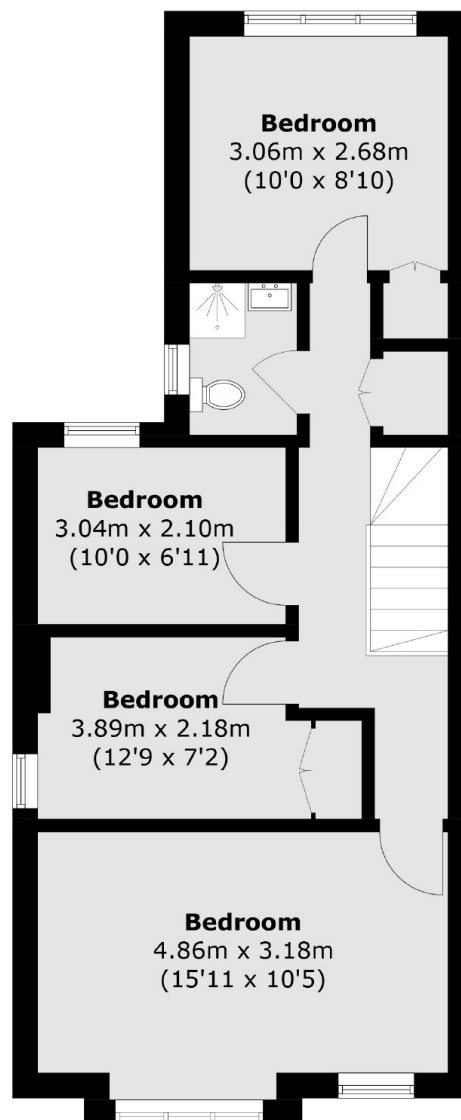
Features

- Four Bedrooms
- Two Reception Rooms
- Large Garden
- Potential To Extend (STPP)
- No Onward Chain
- Off-Street Parking

Millbourne Road, Feltham, TW13



Ground Floor



First Floor

Total area (approx.): 112.8 sq. m (1,214.1 sq. ft)