



Buckingham Road, TW12

£200,000

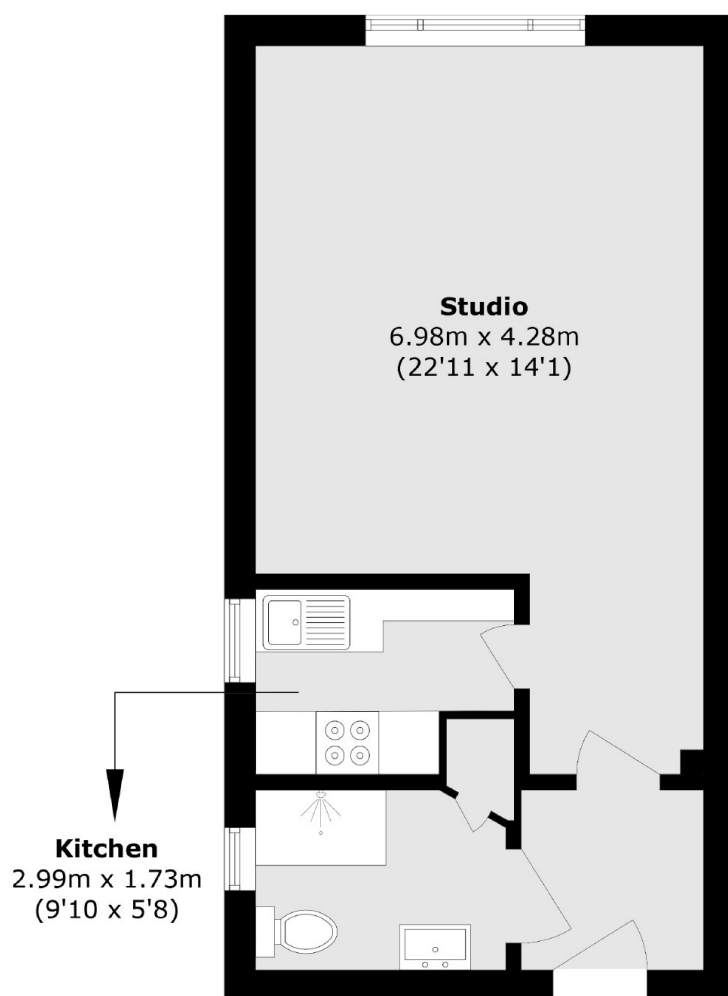
This is a large studio flat set within a purpose built block that comes with parking and a communal garden. It's a great size and others in the building have converted them into one and two bedroom flats.

Lincoln Court is in a convenient position within Hampton, Sainsburys, bus routes and Hampton common all nearby. Hampton station is less than a mile away.

Features

- Large Studio Flat
- First Floor
- Communal Garden
- Parking
- Long Lease
- No Onward Chain

Buckingham Road, Hampton, TW12



Total area (approx.): 37.8 sq. m (406.9 sq. ft)

Dexters

Hampton
93 Station Road
Hampton
TW12 2BD
Sales
020 8255 7777

Energy Rating: TBC. We aim to make our particulars both accurate and reliable. However they are not guaranteed; nor do they form part of an offer or contract. If you require clarification on any points then please contact us, especially if you're traveling some distance to view. Please note that appliances and heating systems have not been tested and therefore no warranties can be given as to their good working order.

 **RICS** | Regulated
Estate Agent
and Letting Agent

dexters.co.uk