



## Thames Street, TW12

### £349,000

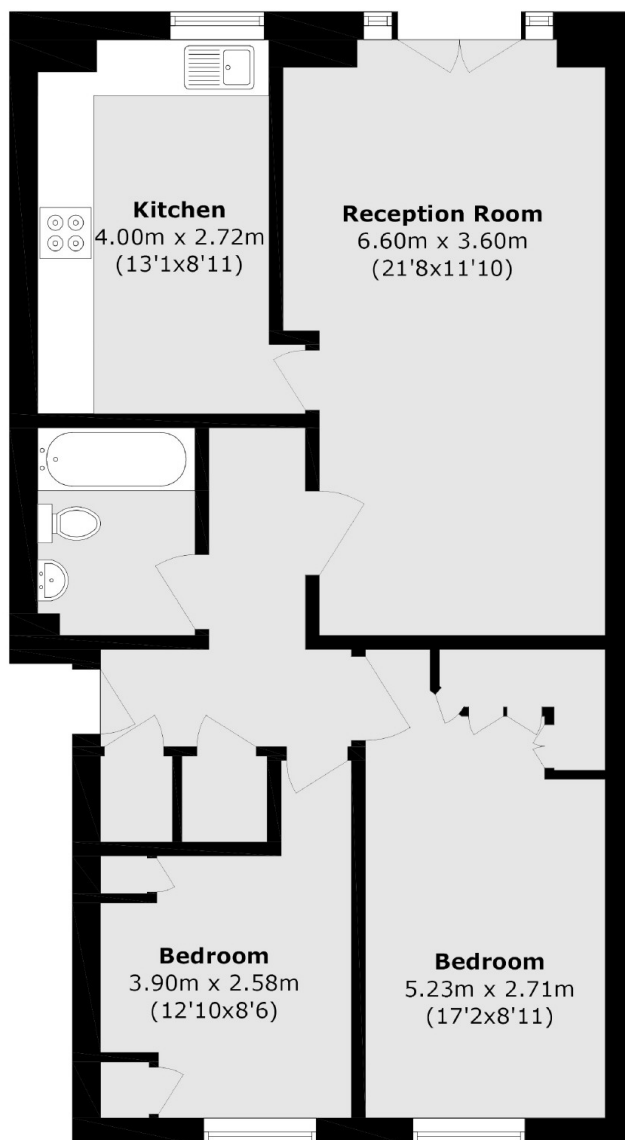
This is a spacious two bed ground floor flat with private garden, parking and good sized rooms. Tucked moments from the riverside and perfect for first-time buyers or investors.

Thames Street is in the oldest part of Hampton with all of the amazing amenities in the local area just around the corner. Hampton Court Palace and Bushy Park are nearby as is the River Thames.

### Features

- Two Bedrooms
- Ground Floor
- Private Garden
- Off Street Parking
- Long Lease
- No Onward Chain

# Thames Street, Hampton, TW12



Total area (approx.): 66.4 sq. m (714.7 sq. ft)

## Dexters

Hampton  
93 Station Road  
Hampton  
TW12 2BD  
Sales  
020 8255 7777

Energy Rating: . We aim to make our particulars both accurate and reliable. However they are not guaranteed; nor do they form part of an offer or contract. If you require clarification on any points then please contact us, especially if you're traveling some distance to view. Please note that appliances and heating systems have not been tested and therefore no warranties can be given as to their good working order.

 **RICS** | Regulated  
Estate Agent  
and Letting Agent

[dexters.co.uk](https://www.dexters.co.uk)