



Wordsworth Road, TW12

£425,000

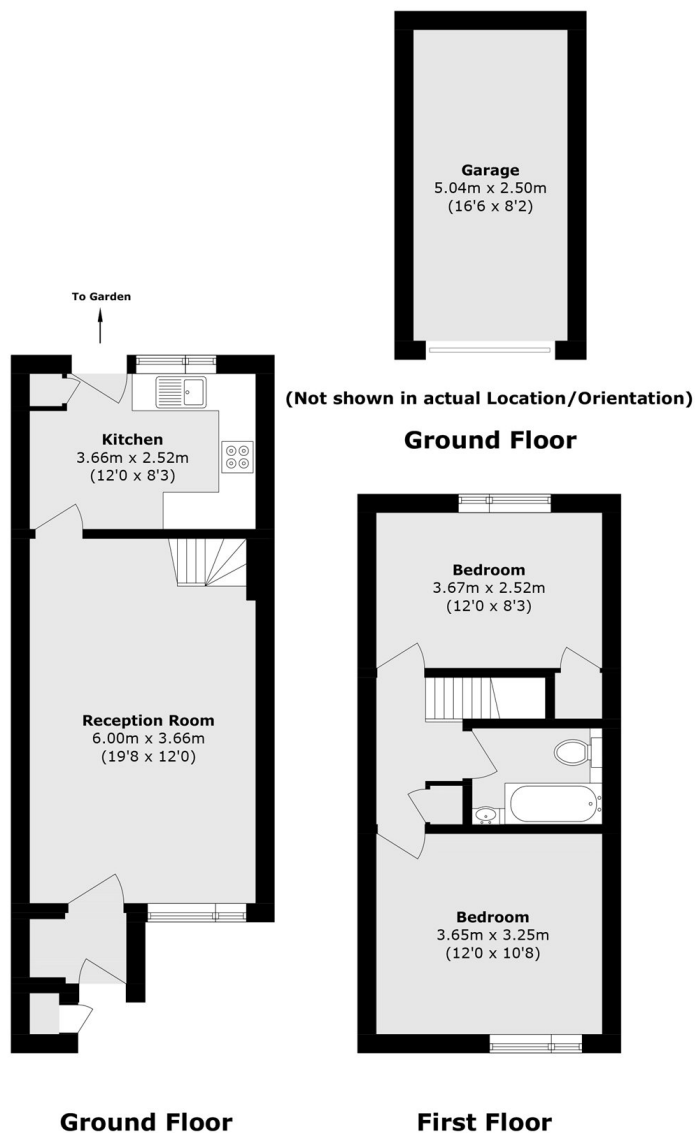
This is a brilliant two bedroom house that would make a perfect first time buy or investment, having scope to extend (subject to planning permission) and coming with no onward chain.

Wordsworth Road is located within the popular 'Poets' development in Hampton, a choice of state and private schools are all within walking distance. Bus routes, local parks, Hampton High Street, Bushy Park are all nearby.

Features

- Two Bedrooms
- No Onward Chain
- Garage
- Scope To Extend (STPP)
- Private Garden
- Rear Access

Wordsworth Road, Hampton, TW12



Total area (approx.): 64.3 sq. m (692.1 sq. ft)
Garage Total (approx.): 12.6 sq. m (135.6 sq. ft)
External Storage (approx.): 3.8 sq. m (40.9 sq. ft)