



Birchwood Grove, TW12

£775,000

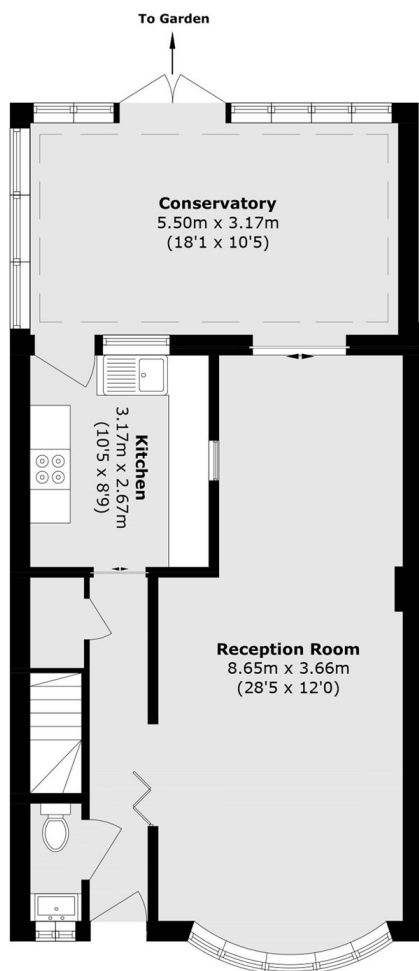
This Neo-Georgian three bedroom, two bathroom house comes with a garage, private garden and no onward chain. We are anticipating a lot of interest so please do drop us a call to view.

Birchwood Grove is a quiet cul de sac located off Acacia Road. This is an ideal spot for those looking to be close to Hampton High School or LEH and Hampton Boys. The High Street and Bushy Park are only a short stroll away.

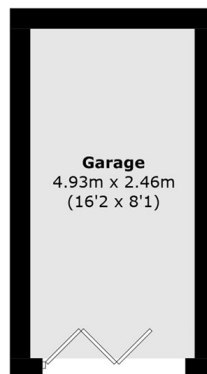
Features

- Three Bedrooms
- Two Bathrooms
- No Onward Chain
- Private Garden
- Garage
- Conservatory

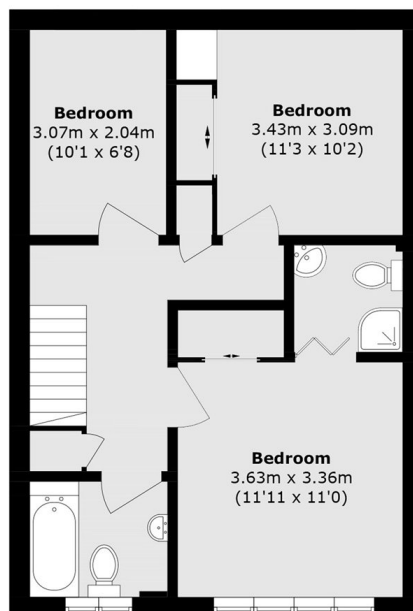
Birchwood Grove, Hampton, TW12



Ground Floor



Ground Floor



First Floor

Total area (approx.): 114.4 sq. m (1231.4 sq. ft)

Garage area (approx.): 12.1 sq. m (130.2 sq. ft)