



Tudor Road, TW12

£825,000

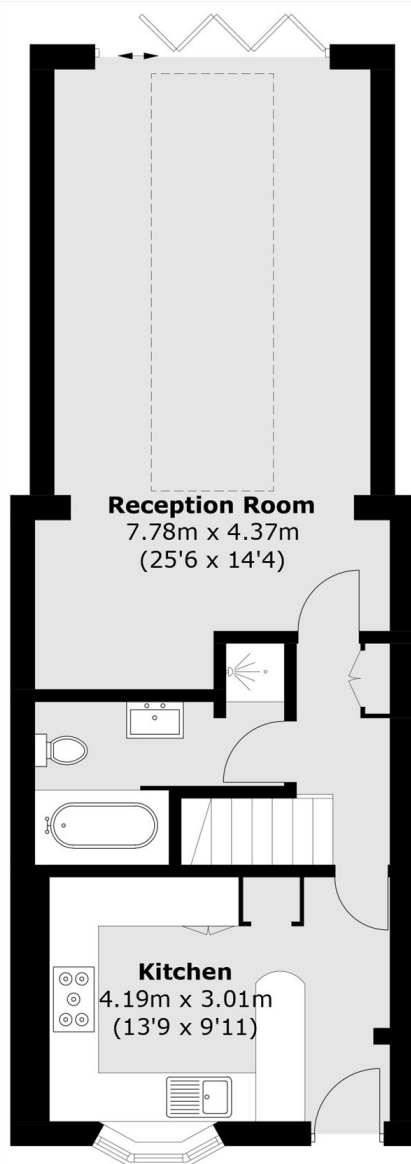
This is a pretty Victorian house with a stylish kitchen/breakfast room and a bright extended reception opening onto a long, private rear garden. Well presented throughout, with three bedrooms above and a great balance of character and modern living.

Tudor Road is in the heart of Hampton Village in the perfect setting to enjoy all of the benefits to living in Hampton. Nearby are a choice of excellent state and private schools, local parks, Waitrose, Hampton station and the River Thames.

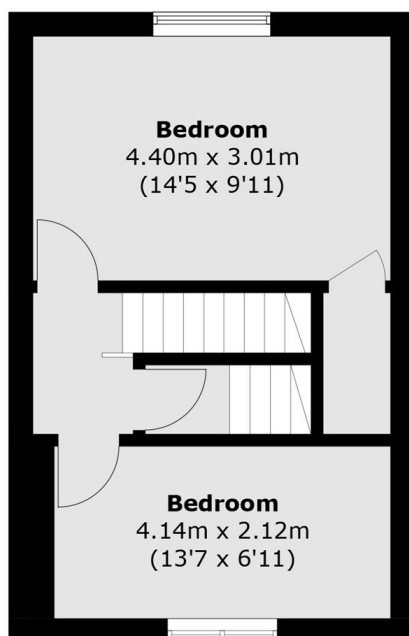
Features

- Victorian
- Three Bedrooms
- Two Bathrooms
- Rear Extended
- Vaulted Ceilings
- Private Garden

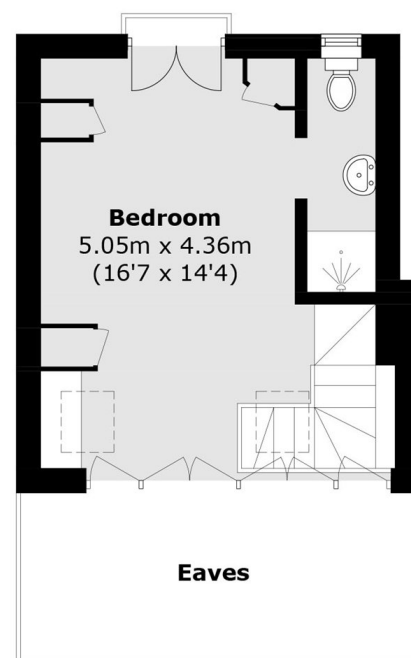
Tudor Road, Hampton, TW12



Ground Floor



First Floor



Second Floor

Total area (approx.): 107.3 sq. m (1,154.9 sq. ft)
(Excluding Eaves)