



Linden Road, TW12

£2,095 Per calendar month

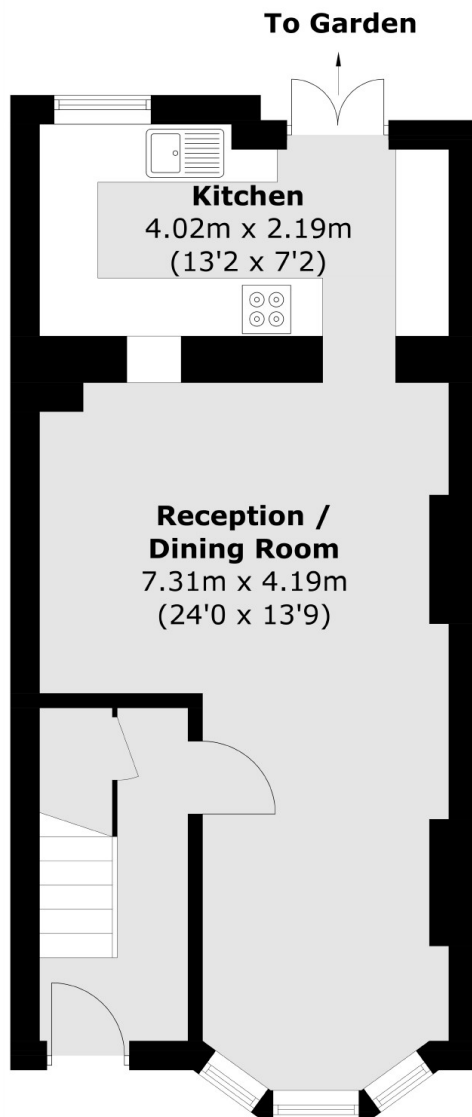
A well presented two bedroom home with features including Victorian coving & fireplaces, a spacious living/dining room, modern kitchen, luxury bathroom and a private rear garden.

Linden Road is within Hampton Village, minutes from Hampton Station and just a short stroll to local shops, restaurants and pubs.

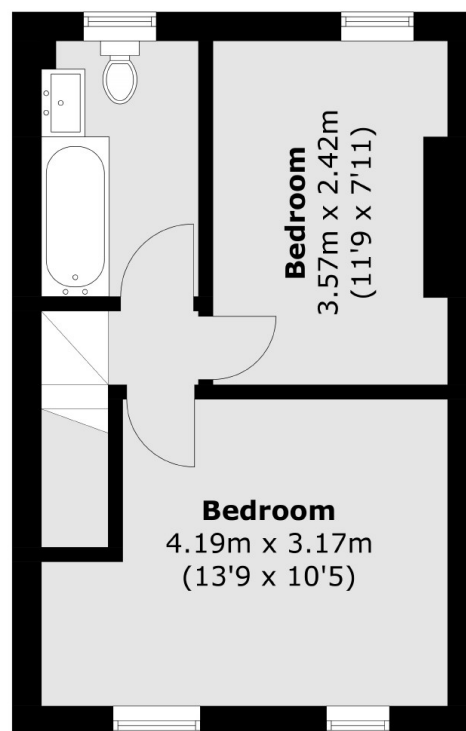
Features

- Period Home
- Two Bedrooms
- Modern Kitchen
- Luxury Bathroom
- Private Garden
- Village Location

Linden Road,
Hampton, TW12



Ground Floor



First Floor

Total area (approx.): 69.3 sq. m (745.9 sq. ft)