



Morshead Yard, TW12

£385,000

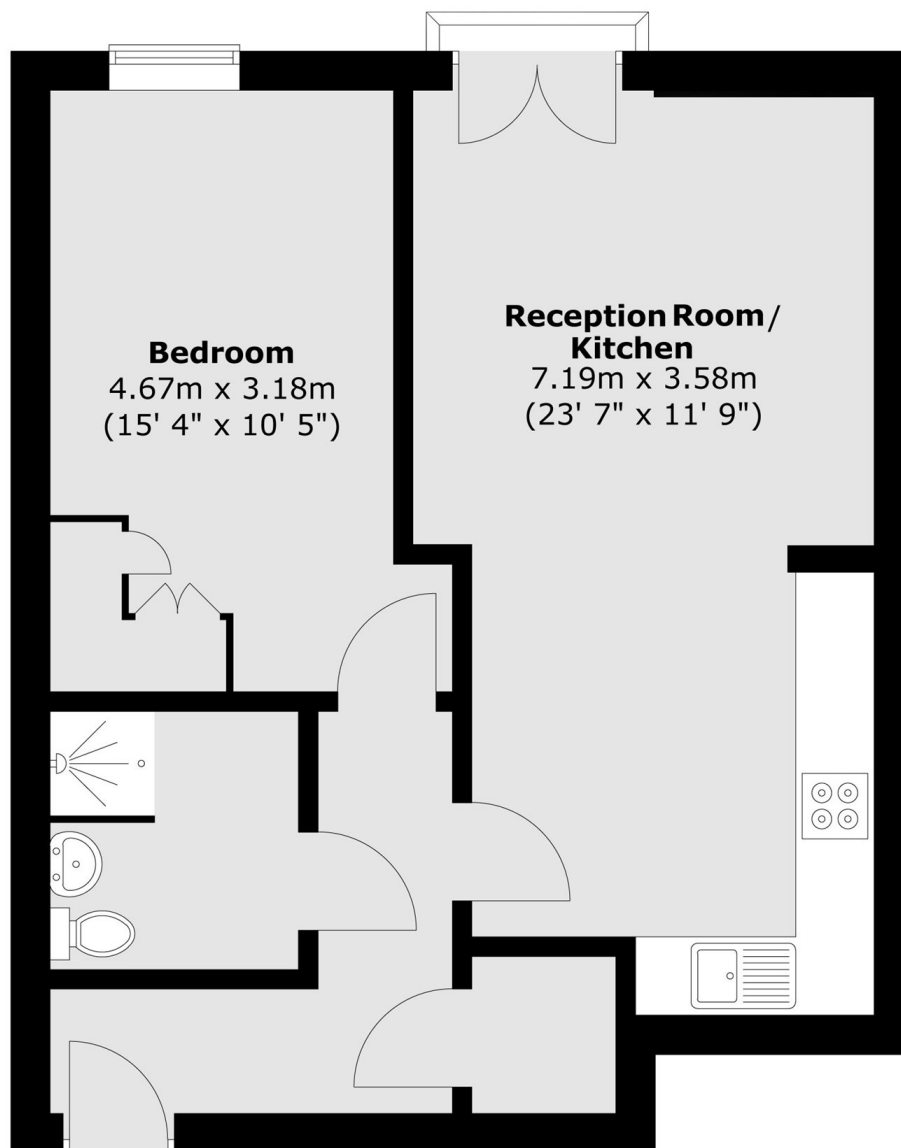
This is an immaculately presented, first floor flat with a secure entry system and set within a private development. Ideal as a first time buy or downsize, particularly if you want the easy commute, we are expecting it to be popular.

Woolmore House is conveniently located close to local bus routes to Heathrow, and Hampton train station which runs a regular service into London Waterloo. There are a selection of shops and cafés nearby as well as the river and Bushy Park.

Features

- One Bedroom
- First Floor Flat
- Near To The Station
- Private Development
- Secure Entry System
- Bike Storage

Morshead Yard, Hampton, TW12



Total area (approx.) : 50.7 sq. m (546.1 sq.ft)