



## Laytons Lane, TW16

### £489,950

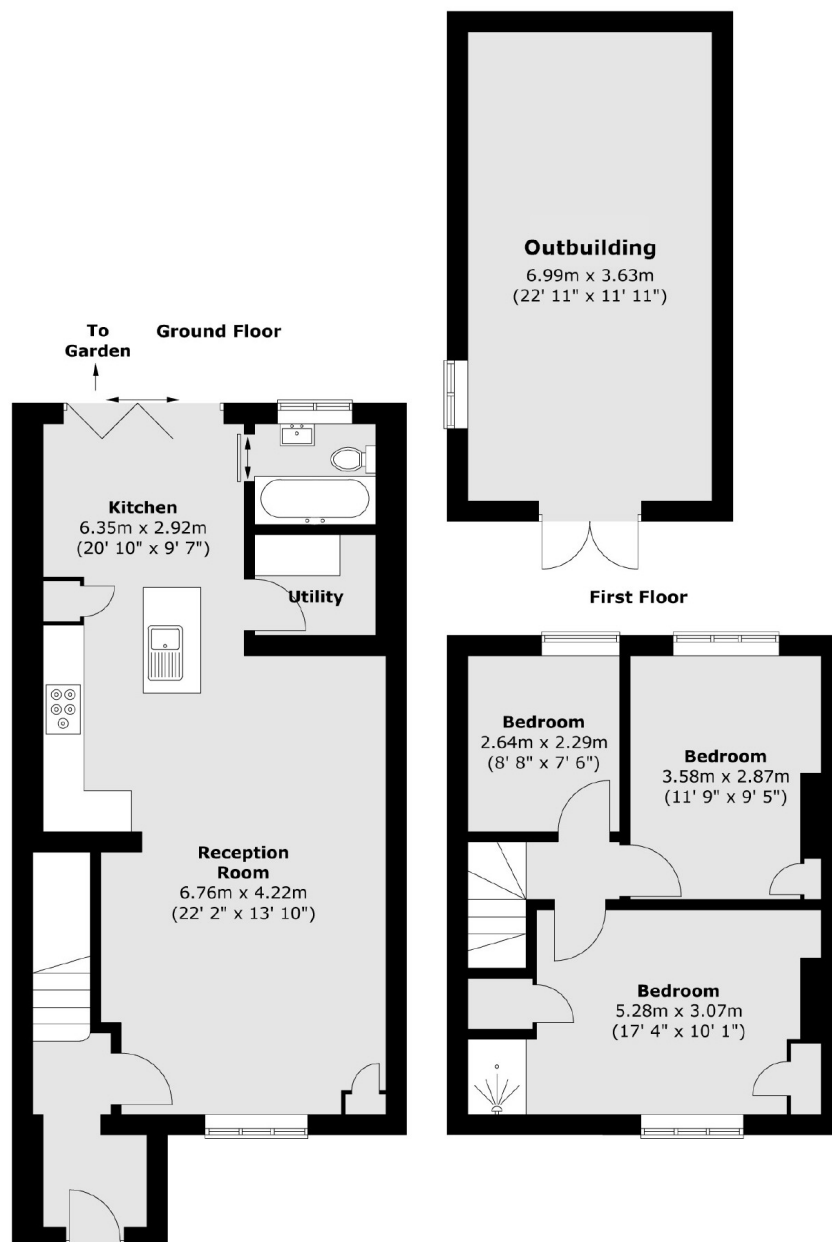
A three bedroom family home that has been thoughtfully extended by the current owners to create a spacious and stylish kitchen perfect for entertaining friends and family. Early viewings are advised to avoid disappointment.

Layton's Lane is located off Nursery Road and provides easy access to local amenities, shops and schools. Upper Halliford Station is 0.3 miles away and approximately 0.4 miles from Sunbury Station. Motorists also have easy access to the M3 and A316.

### Features

- Three Bedrooms
- Open Plan Kitchen
- Utility Room
- Driveway
- Private Garden
- Large Outbuilding

# Laytons Lane, Sunbury-On-Thames, TW16



Total area (approx.) : 92.5 sq. m (995 sq. ft)  
Total outbuilding area (approx.) : 25.7 sq. m (276 sq. ft)

## Dexters

Sunbury  
22 Thames Street  
Sunbury-On-Thames  
TW16 6AF

Sales  
01932 781100

Energy Rating: C. We aim to make our particulars both accurate and reliable. However they are not guaranteed; nor do they form part of an offer or contract. If you require clarification on any points then please contact us, especially if you're traveling some distance to view. Please note that appliances and heating systems have not been tested and therefore no warranties can be given as to their good working order.

 **RICS** | Regulated  
Estate Agent  
and Letting Agent

[dexters.co.uk](https://www.dexters.co.uk)