



## Mornington Road, TW15

### £450,000

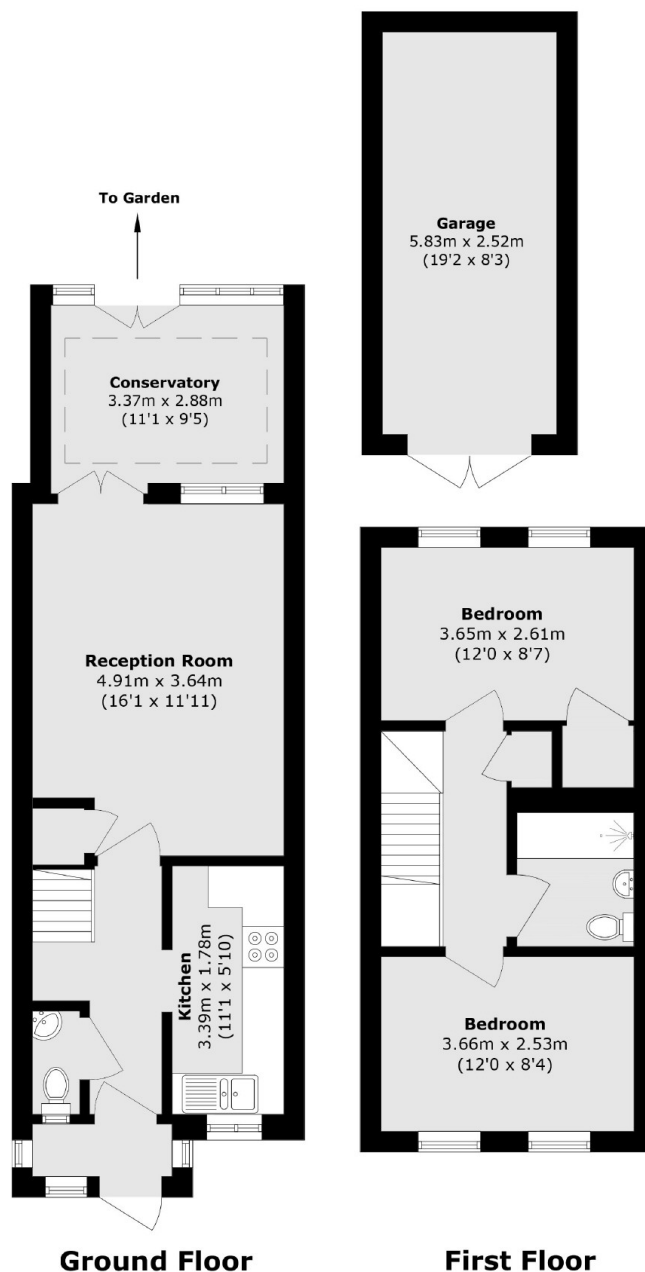
A beautifully presented two-bedroom semi-detached house, ideal as a starter home, thoughtfully maintained by the current owner and offering comfortable, stylish living in a desirable location perfect for first-time buyers or someone downsizing!

Mornington Road is a fantastic location found just off of Feltham Road. With easy access to the M3 motorway and Ashford station just over a mile away.

### Features

Semi-Detached  
Two Bedrooms  
Modern Finish  
Conservatory  
Private Garden  
Downstairs WC

# Mornington Road, Ashford, TW15



Total area (approx.): 74.8 sq. m (805.1 sq. ft)  
Garage area (approx.): 14.7 sq. m (158.2 sq. ft)