



Vereker Drive, TW16

£1,250,000

A spacious five bedroom detached house on a large corner plot with a double garage and off street for a approximately six cars. The property has a flexible layout and the potential to be extended even further (STPP).

This is an amazing location! Vereker Drive is off Green Street, within the popular 'Berg Development' and the house over looks green space and trees. Everything Sunbury Village has to offer is close by including Sunbury Park and the famous 'Walled Garden' the local village shops, the River Thames and riverside pubs.

Features

- Large Corner Plot
- Detached
- Five Bedrooms
- Two Bathrooms
- Double Garage
- Ample Off Street Parking



Vereker Drive, TW16

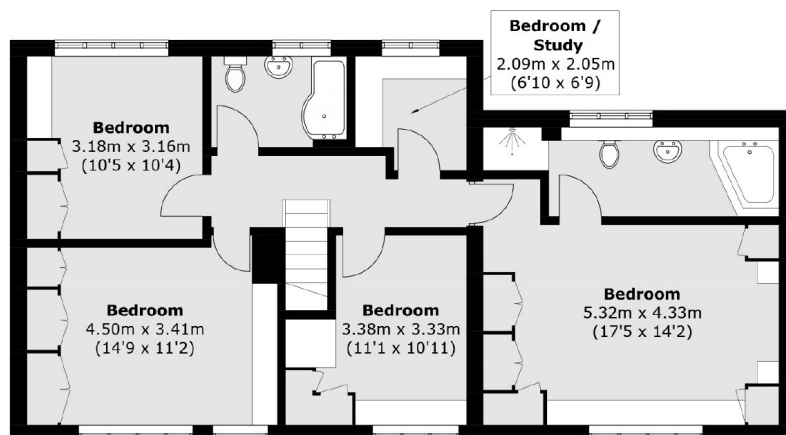
On the ground floor there is a welcoming entrance hallway, an extended double reception room and an open plan kitchen and dining area. There is also the added bonus of a downstairs W.C.

On the first floor there is a generous master bedroom with built in wardrobes and a large en-suite bathroom with corner bath and separate walk in shower, there are four additional bedrooms and a family bathroom.

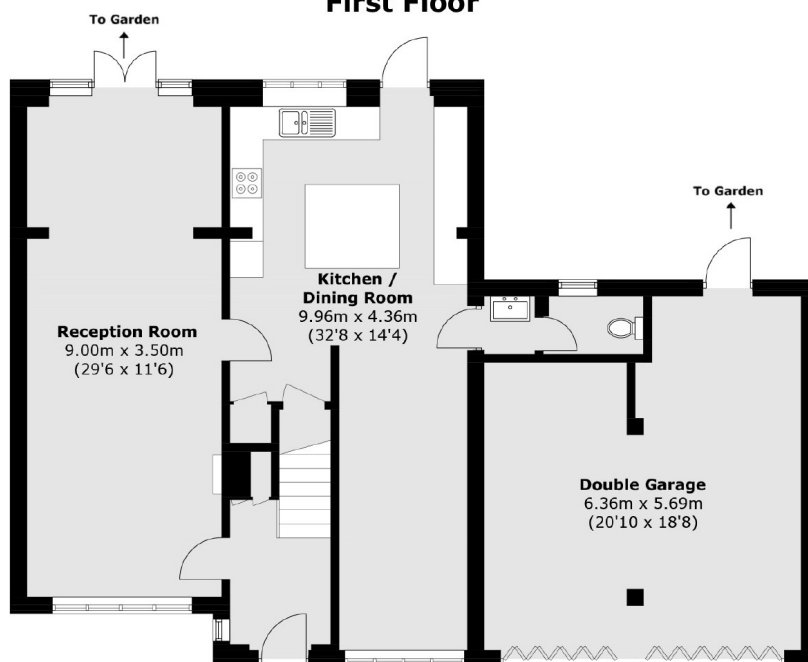
This unique property is on a large corner plot and the low maintenance rear garden is perfect for entertaining friends and family. This is a family home that needs to be viewed to be fully appreciated.



Vereker Drive, Sunbury-On-Thames, TW16



First Floor



Ground Floor

Approx Internal Area: 160.9 sq. m (1,731.9 sq. ft)

Garage: 33.5 sq. m (360.6 sq. ft)

Total: 194.4 sq. m (2,092.5 sq. ft)