



Russell Road, TW17

£475,000

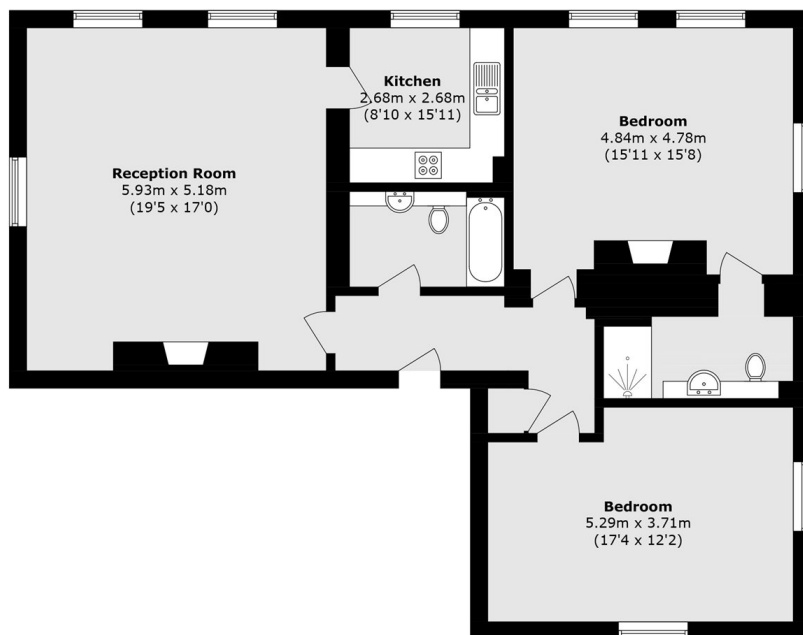
A stunning two double bedroom, two bathroom, character apartment covering the entire top floor of this incredible character building which dates back to the late 18th Century. Further bonuses include, no forward chain, two allocated parking spaces and a landscaped communal garden.

Thamesfield House, is set back from Russell Road and only a stones throw from the River Thames. Shepperton High Street with offers a great selection of shops and restaurants is just around the corner and the station which provides a direct service into London Waterloo is approximately half a mile away.

Features

- Top Floor
- Over 1,100 sq.ft
- Two Bedrooms
- Two Bathrooms
- Two Parking Spaces
- Communal Gardens

Russell Road, Shepperton, TW17



(Not shown in actual Location/Orientation)

Total area (approx.): 101.3 sq. m (1090.3 sq. ft)
External Storage (approx.): 10.7 sq. m (115.1 sq. ft)